

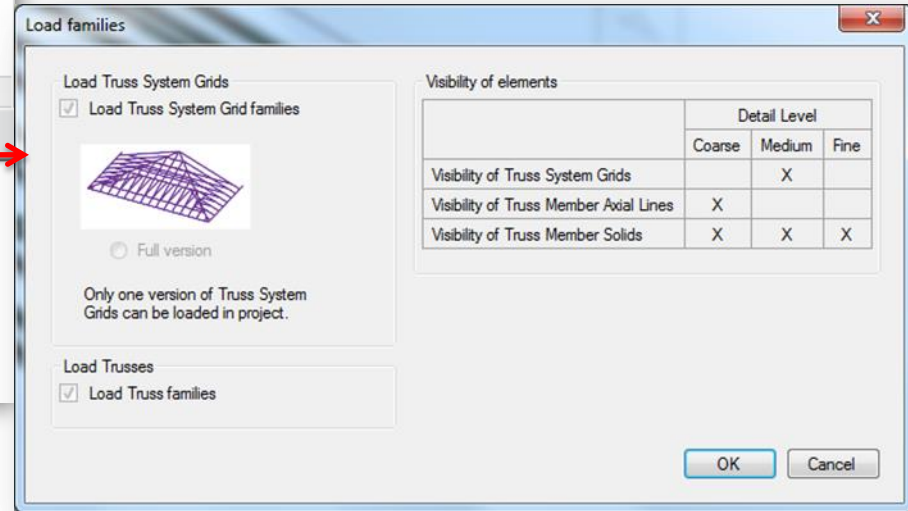
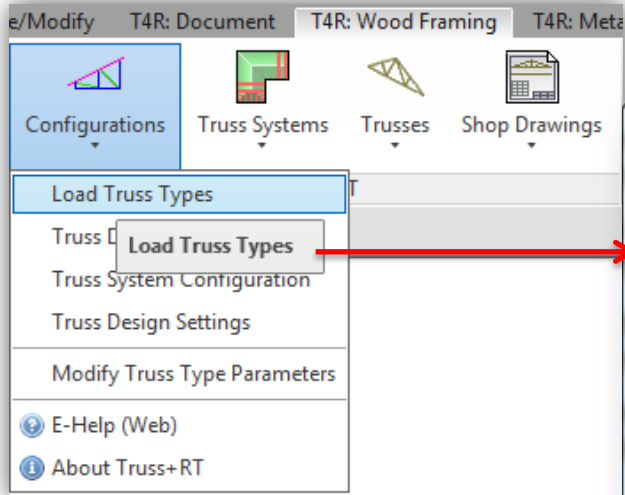
An abstract geometric wireframe structure, resembling a complex truss or a series of interconnected planes, is rendered in a glowing blue color. It is positioned in the center-right of the frame, appearing to float or be projected onto the floor of a large, empty parking garage. The garage has a high ceiling with exposed concrete beams and several long, horizontal fluorescent light fixtures. The floor is a smooth, light-colored surface. In the background, there are concrete pillars and a wall with a large number '7' visible on the right side. The overall atmosphere is futuristic and architectural.

# TRUSS+

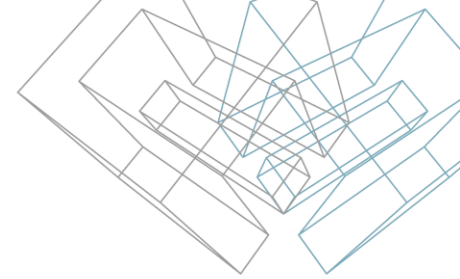
## Load Truss Types

# Loading Truss Types

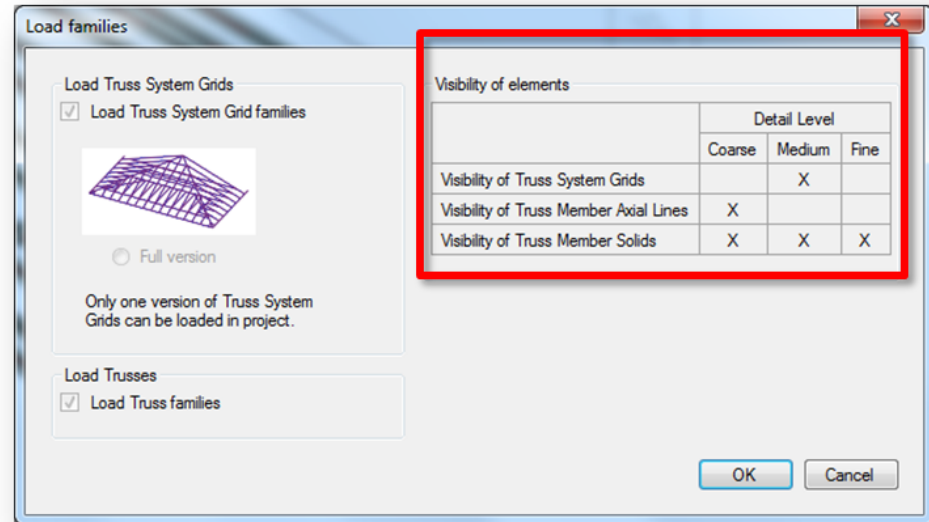
Choose *Load Truss Types* directly from “Truss+” menu.



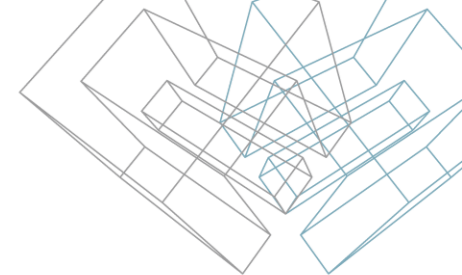
# Load Families – Visibility of Elements



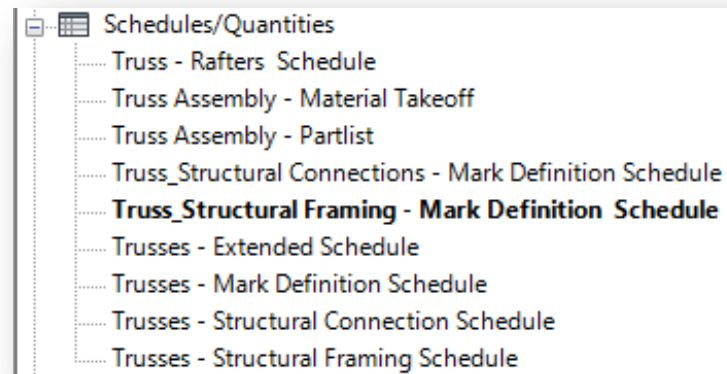
- The command *Load Truss Types* loads truss system grids, structural trusses and other structural framing families into the project.
- To avoid this time-consuming operation, the user can save file as a template after loading families.
- Visibility settings depend on Detail Level.



# Load Families – Schedules



- The command *Load Truss Types* loads sample schedules to the project. Mark Definition Schedules allow to predefine or edit marking of elements at any time.
- Other schedules can be used for scheduling trusses and structural framing elements in standard view and assembly views.
- Those sample schedules can be used as templates for truss assembly schedules.



# The command *Load Truss Types* loads:

- Truss System Grids

- M\_Truss\_Truss System Grid BarnEnd
  - M\_Truss\_Truss System Grid GableEnd
  - M\_Truss\_Truss System Grid HipEnd
  - M\_Truss\_Truss System VS Grid ValleySet

- Nested Structural Framing families of Truss System Grids

- M\_Truss\_TSGrid\_CT\_Grid
  - M\_Truss\_TSGrid\_HET\_Grid
  - M\_Truss\_TSGrid\_HF\_Grid
  - M\_Truss\_TSGrid\_J\_Grid
  - M\_Truss\_TSGrid\_TB\_Grid
  - M\_Truss\_TSGrid\_VT\_Grid

- Structural Trusses

- Structural Trusses
    - M\_Truss\_Common Truss Attic Room 1L+1R
    - M\_Truss\_Common Truss Double Howe&Gambrel\_2L+2R
    - M\_Truss\_Common Truss Double Howe\_1L+1R
    - M\_Truss\_Common Truss Double Pitch&Gambrel Attic\_2L+2R
    - M\_Truss\_Common Truss Double Pitch&Gambrel Rafters\_2L+2R
    - M\_Truss\_Common Truss Howe\_1L+1R
    - M\_Truss\_Common Truss Raised Vault\_2L+2R
    - M\_Truss\_Common Truss Tray Ceiling\_2L+2R
    - M\_Truss\_Corner Girder Truss Mono Howe\_1L
    - M\_Truss\_Gable Truss Common&Gambrel\_Drop Top\_2L+2R
    - M\_Truss\_Hip End Truss Howe\_1L+1C+1R
    - M\_Truss\_Jack Truss Howe\_1L
    - M\_Truss\_Mono Pitch Truss Double Howe\_1L
    - M\_Truss\_Scissors Truss Double Howe\_1L+1R
    - M\_Truss\_Valley Truss Standard

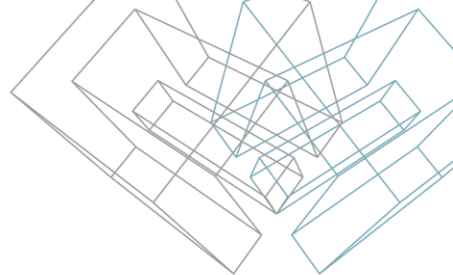
- Structural Framing families of Truss Webs and Chords.

- M\_Truss\_Wood Beam
  - M\_Truss\_Wood Chord
  - M\_Truss\_Wood Web

- Structural Framing families of Rafters

- M\_Truss\_Board Wood Beam
  - M\_Truss\_Hip Rafter Wood Beam
  - M\_Truss\_Rafter Wood Beam

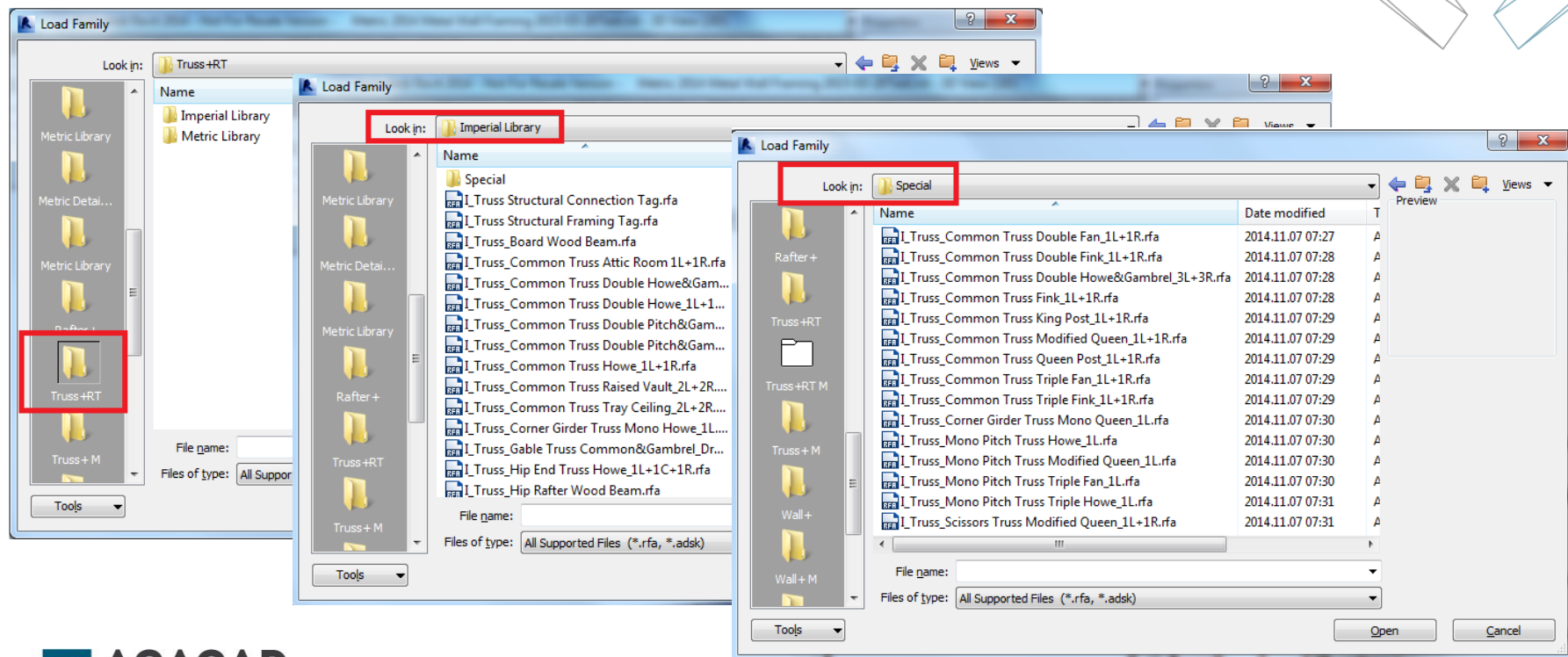
**Note:** Family name begins with “I\_Truss\_” for imperial units and with “M\_Truss\_” for metric units.

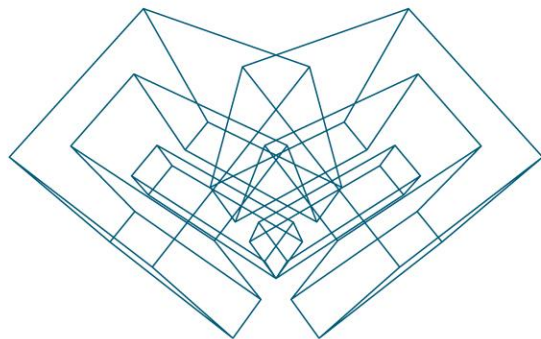




# Load Additional Truss Types

- To load additional Truss Types, use **Load Family** command from Revit Menu.





AGA CAD Ltd

T: +370 618 55671 | E: [support@aga-cad.com](mailto:support@aga-cad.com) | W: [www.aga-cad.com](http://www.aga-cad.com)