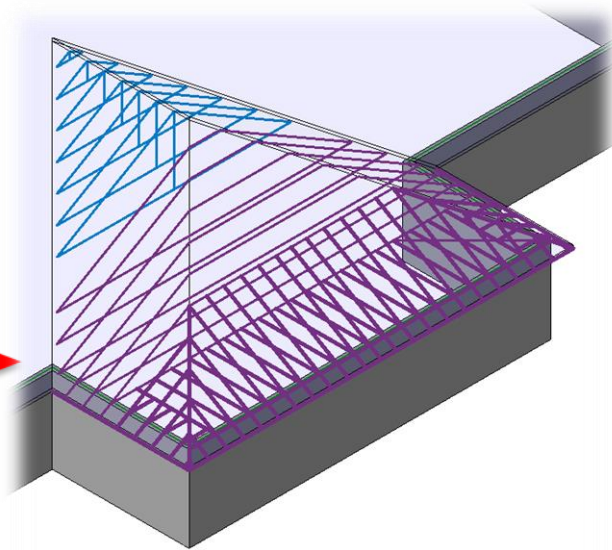
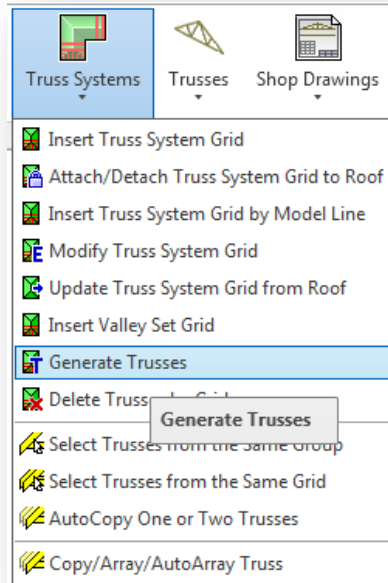




# Truss+ Generate Trusses

# Generate Trusses

- Select a grid.
- Choose *Generate Trusses* directly from “Truss+” menu.



# Generate Trusses

- Check which trusses you want to generate and choose types.

Generate Trusses

Truss System

Truss System: Step Down - HE-HG-JT-SB2400-TCH35x90

Top Chord: 35.00 x 90.00 (thickness x depth)

Set Back: 2400.00

Span: 9893.30

Generate

☒ Common trusses M\_Truss\_Common Truss Attic Room 1L+1R : W35\_TCH90\_VW90\_DW90\_BCH90

☒ Hip (Barn) end trusses M\_Truss\_Hip End Truss Double Howe&Gambrel\_3L+3R : W35\_TCH90\_VW90\_DW90\_B

☒ Jack trusses M\_Truss\_Jack Truss Howe\_1L : W35\_TCH90\_VW90\_DW90\_BCH90

☒ Jack rafters M\_Truss\_Rafter Wood Beam : 35x90

☒ Comer girder trusses M\_Truss\_Comer Girder Truss Mono Howe\_1L : W35\_TCH90\_VW90\_DW90\_BCH90

☐ Comer girder rafters M\_Truss\_Hip Rafter Wood Beam : 35x90

☐ Gable end trusses M\_Truss\_Common Truss Attic Room 1L+1R : W35\_TCH90\_VW90\_DW90\_BCH90

☐ Valley trusses M\_Truss\_Valley Truss Standard : W35\_TCH90\_VW90\_DW90\_BCH90

☐ Hip frames

☐ Cantilivered trusses

☒ Generate Jack trusses and Comer girders on Left side of Truss System

☒ Generate Jack trusses and Comer girders on Right side of Truss System

Truss design settings

☒ Cope truss elements by parameters

☐ Use vertical cutting type for webs

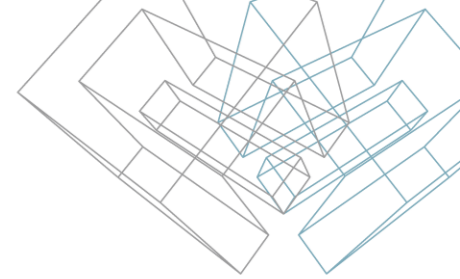
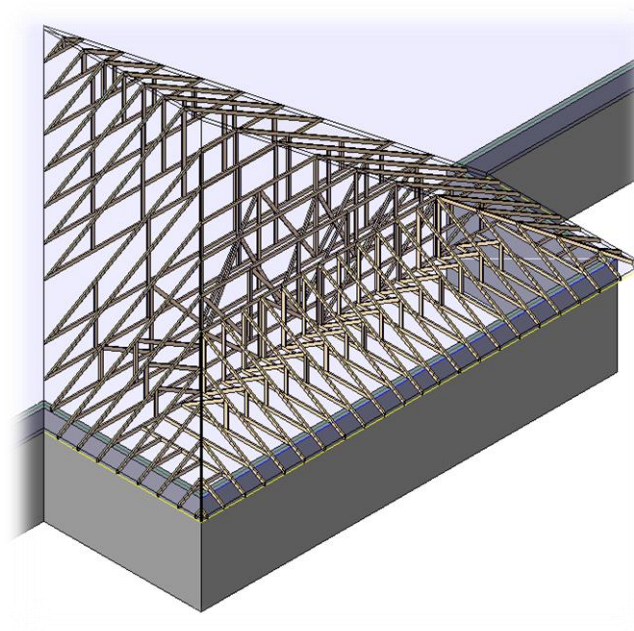
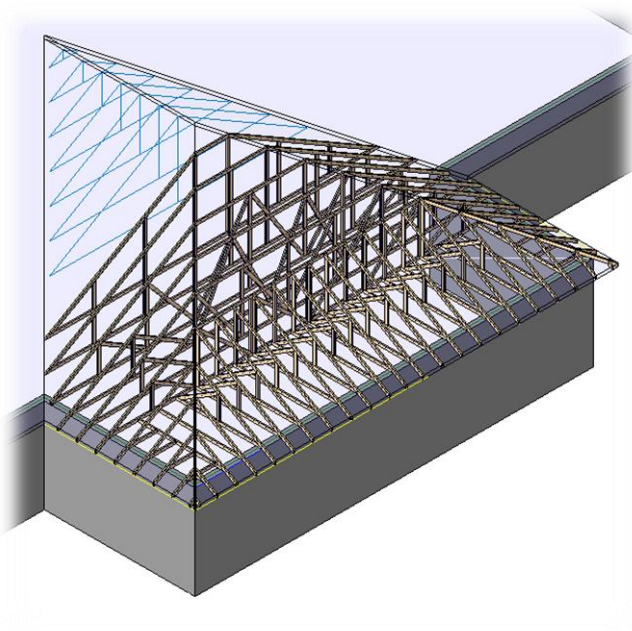
☐ Attach truss to roof top faces

OK Cancel



# Generate Trusses

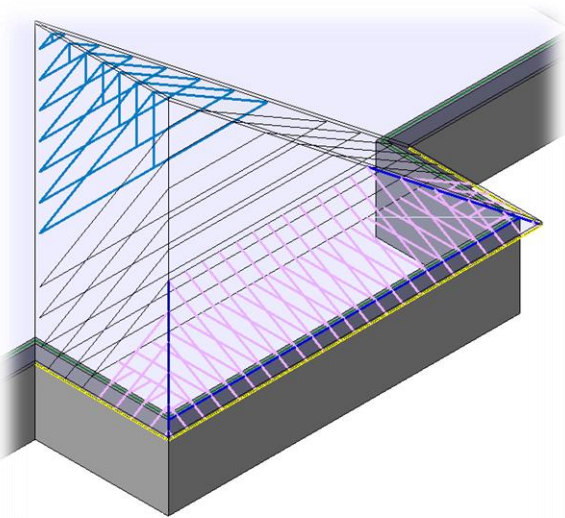
- Repeat it for every grid separately.



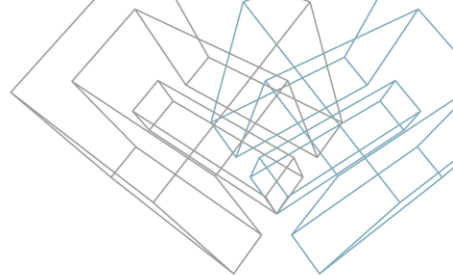
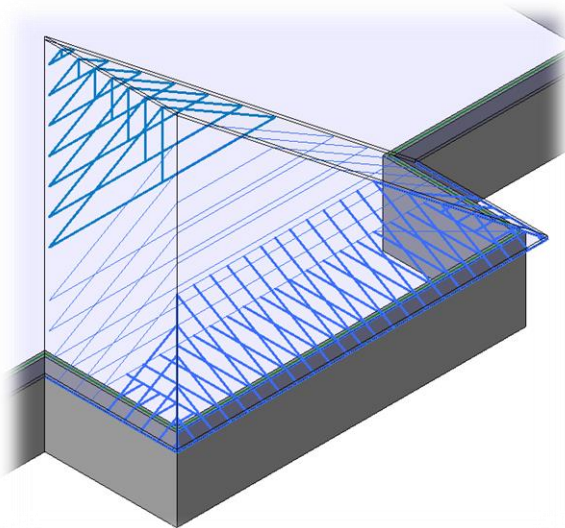
# Generate Trusses

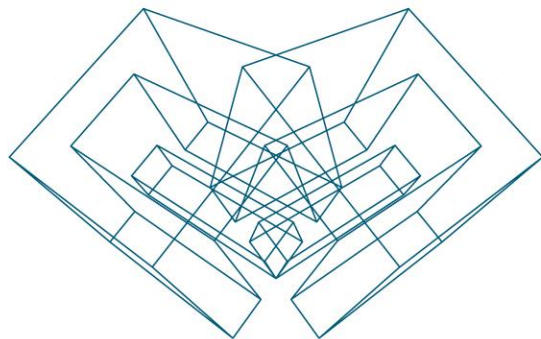
- If an error message 'Select grid' occurs, it means that the user hasn't selected a grid before trying to generate trusses.

Not selected grid



Selected grid





AGA CAD Ltd

T: +370 618 55671 | E: [support@aga-cad.com](mailto:support@aga-cad.com) | W: [www.aga-cad.com](http://www.aga-cad.com)