

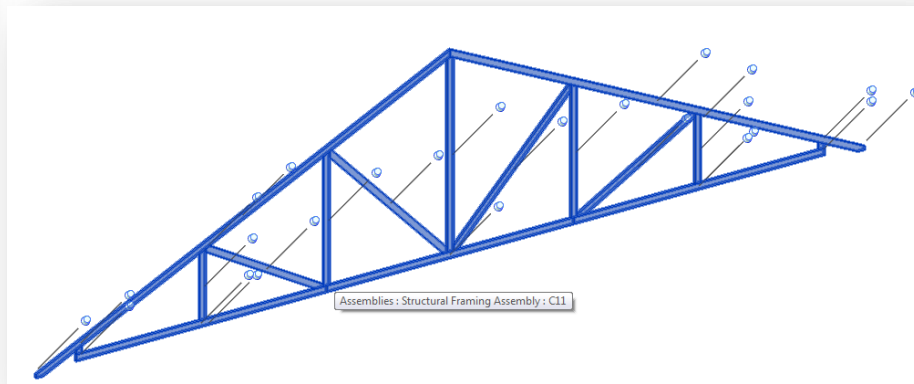
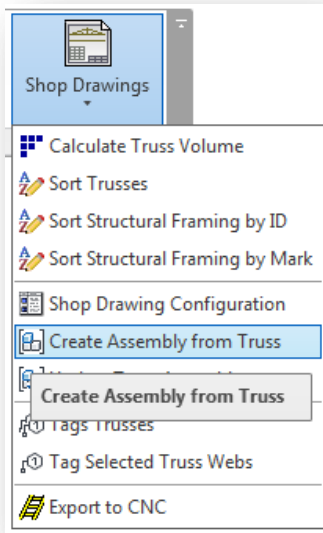


TRUSS+

Create Assembly from Truss

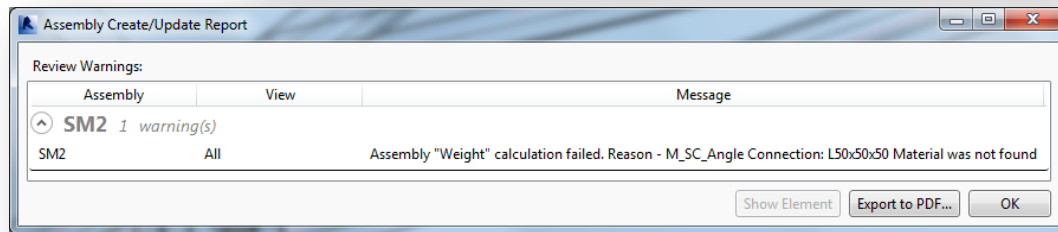
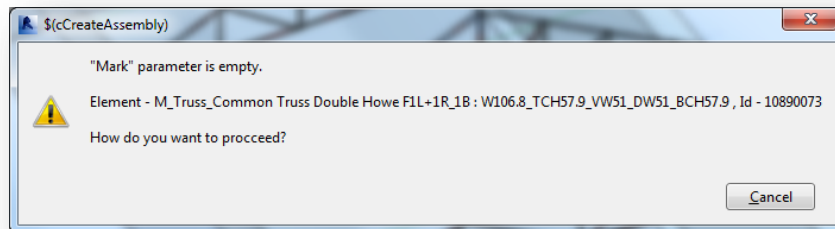
Create Assembly from Truss

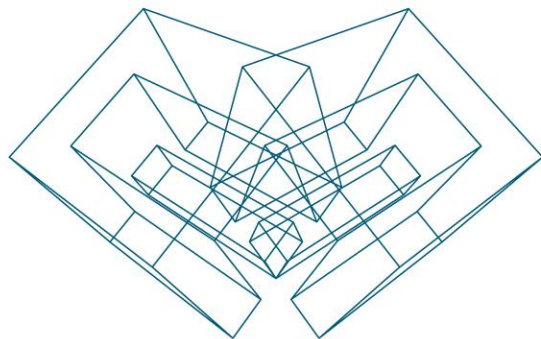
- Select in the project one or more sorted and numbered trusses.
- Run *Create Assembly from Truss* function directly from “Truss+” menu.
- Truss assemblies with predefined views are created if trusses are sorted and all truss elements have assigned material.



Create Assembly from Truss

- User can get a warning message if truss mark parameter is empty.
- Software shows another message if it can't find material of some truss elements and can't calculate weight of the assembly.





AGA CAD Ltd

T: +370 618 55671 | E: support@aga-cad.com | W: www.aga-cad.com