

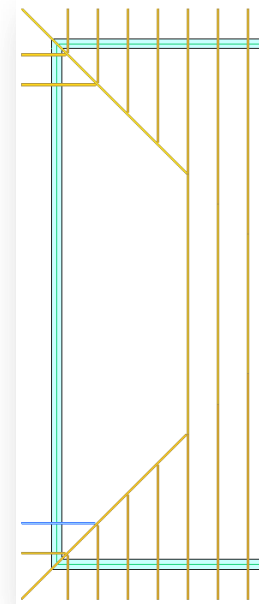
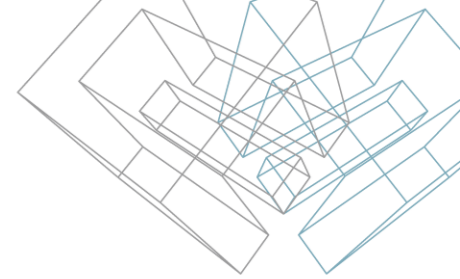
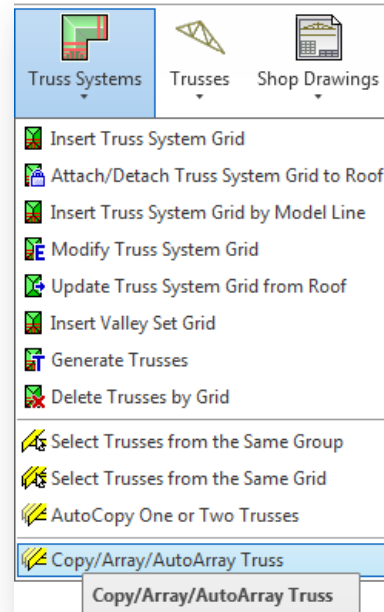
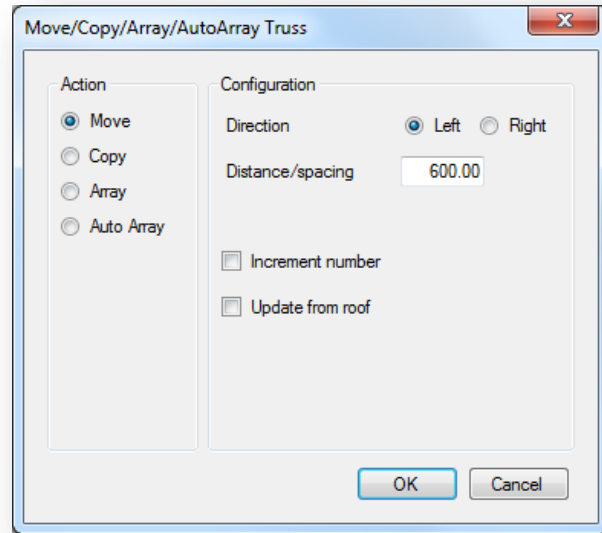


# TRUSS+

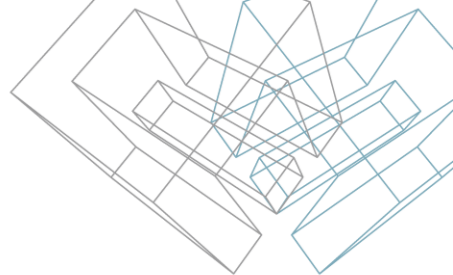
## Copy/Array/AutoArray Truss

# Copy/Array/AutoArray Truss

- Select Truss you want to move, copy, array or auto array.
- Choose the *Copy/Array/AutoArray Truss* function from “Truss+” menu.

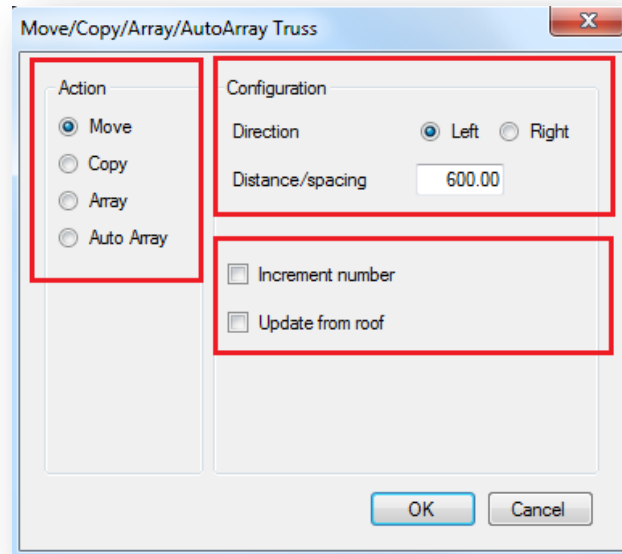


# Copy/Array/AutoArray Truss



In the coming dialog the user has to select action he needs (*Move*, *Copy*, *Array*, *Auto Array*) and define configuration. (If the selected action is *Auto Array*, all configuration settings will be set automatically as they are in Truss configuration or in the truss system grid configuration dialog.)

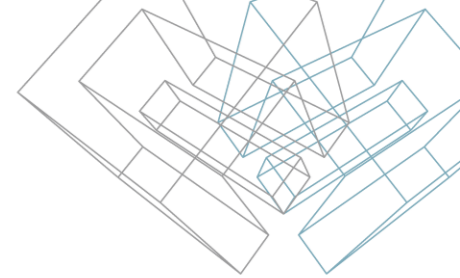
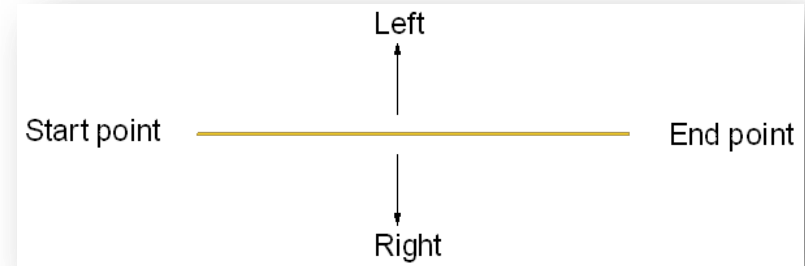
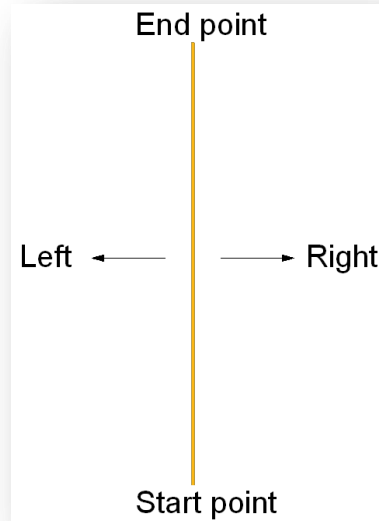
- *Direction* – a truss will be moved, copied or arrayed to the Left or Right direction.
- *Distance/spacing*.
- *Increment number* – every truss is numbered. If Increment number check box is switched On, a copied, arrayed, auto arrayed truss will get an increment number.
- *Update from roof* – every truss is updated from the roof.



# Copy/Array/AutoArray Truss

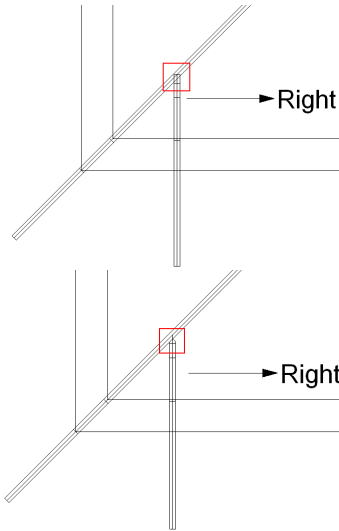
More information about (*Move, Copy, Array, Auto Array*) direction:

- *Direction* – a truss will be moved, copied or arrayed to the Left or Right direction.



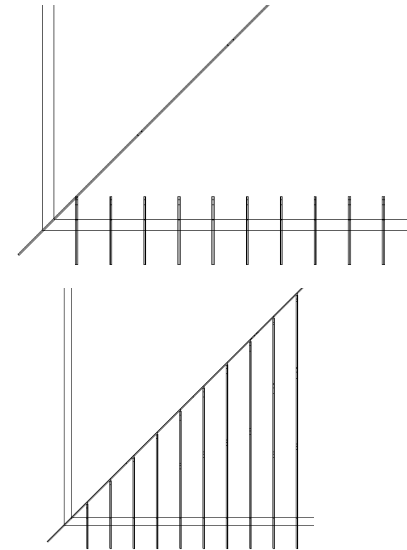
# Copy/Array/AutoArray Truss

- Increment number* check box can be switched On or Off. When it is Off, copied or arrayed trusses will not react on the settings, like the roof ridge or setback distances.



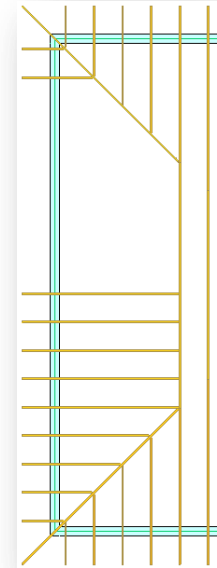
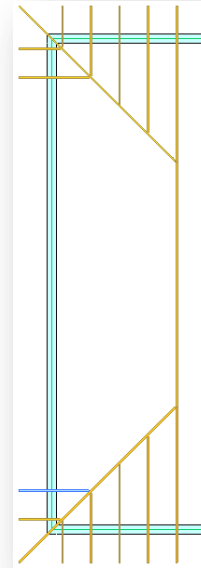
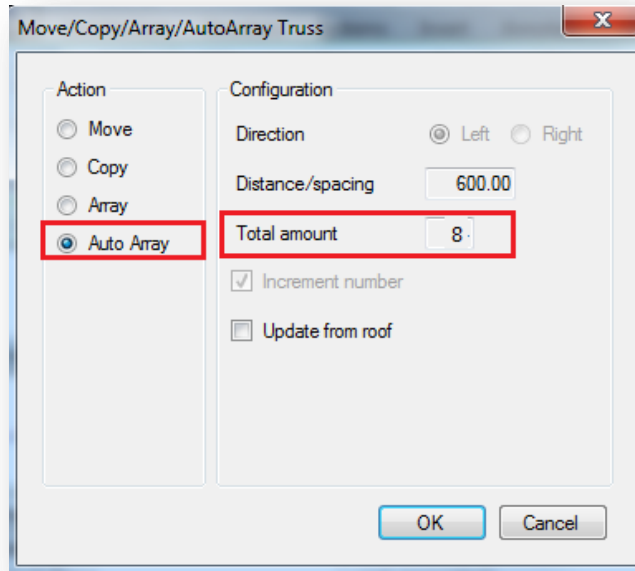
☐ Increment number

☒ Increment number



# Copy/Array/AutoArray Truss

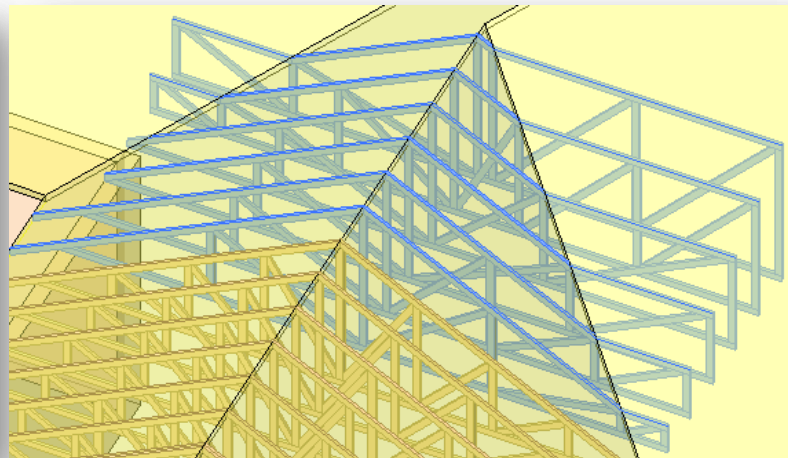
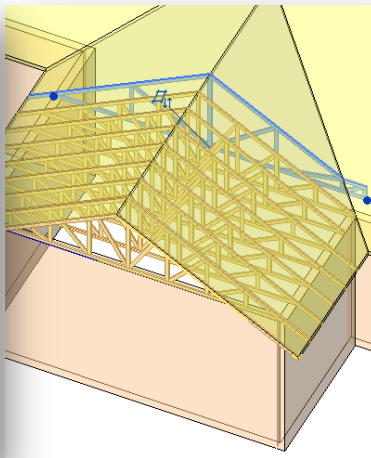
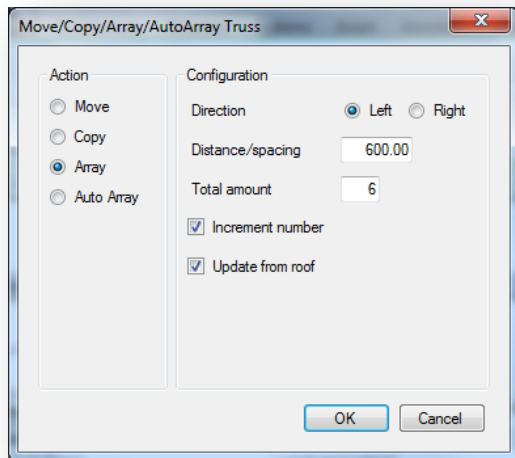
- If the *Auto Array* action is selected, the user doesn't have to set amount of needed trusses, Direction and Spacing. These configuration settings come from Truss configuration or the truss system grid configuration dialog.

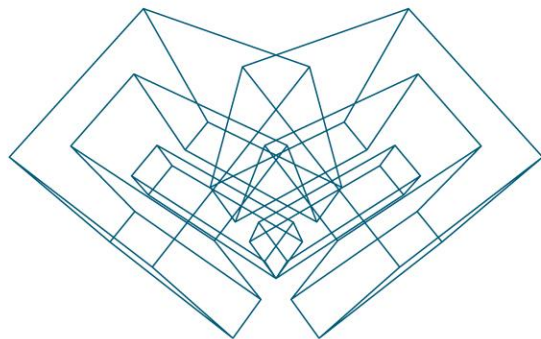




# Copy/Array/AutoArray Truss

- If you want to copy or array special multi-type truss, do not forget to switch On the *Update from roof* check box, so all new trusses will be updated.
- Increment number option will not affect the shape of the truss, it will only give an increment number.
- *Auto Array* option is not active for special multi-type trusses.





AGA CAD Ltd

T: +370 618 55671 | E: [support@aga-cad.com](mailto:support@aga-cad.com) | W: [www.aga-cad.com](http://www.aga-cad.com)