

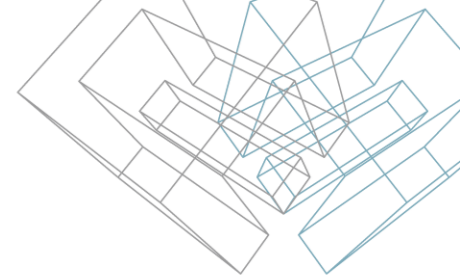


TOOLS4BIM DOCK INSTALLATION & ACTIVATION GUIDE

Network License Activation Instruction

Network License SERVER

Installation Guide



1) Choose the machine that is going to be network license SERVER. Please DON'T forget the name of this machine, because it will be used to configure users' workstations. It can be any PC in your company with following Windows versions: Windows 7, Windows 8/8.1, Windows 10, Windows Server (WS) 2003, WS 2008, and WS 2008 R2.

Note: For easier end-user access it is recommended to install Network License Server on the same machine as Revit Server.

2) Install Network License Server [NetworkLicenceServer*.msi](#) to that machine.

3) Install Microsoft Internet Information Services (IIS):

<http://www.iis.net/learn/install> < The link shows how to install IIS.

4) You need to open TCP 8731 port in your firewall. Please ask your IT administrator to do that.

5) Test NLM Server. Open web browser and enter URL:

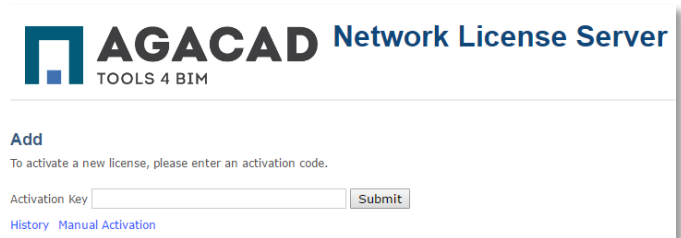
<http://localhost:2468/Web/>

Note: If error page appears, please refer to the [Network License SERVER](#) page of this guide.

6) Open Activation tab in NLM Server.

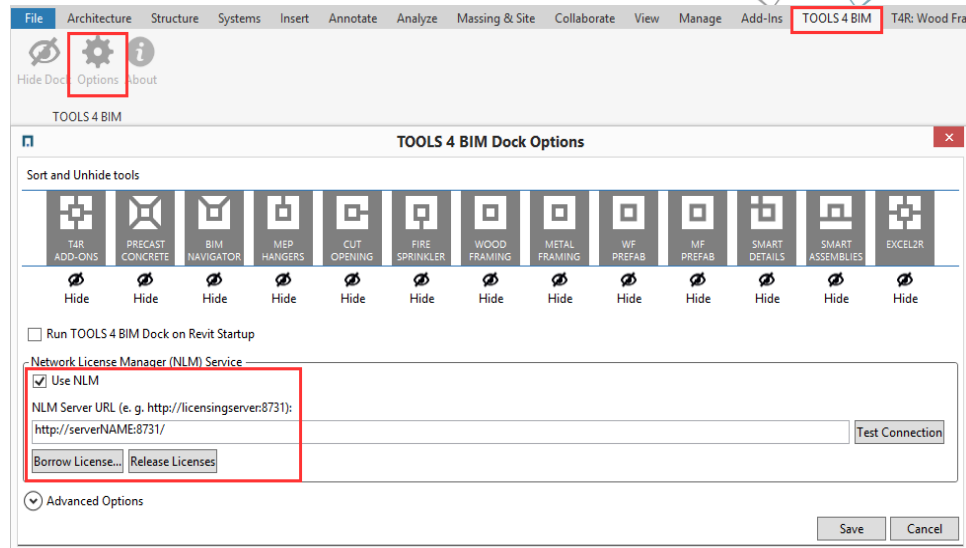
7) Enter provided activation key in Activation key field and press Submit button.

8) To view license details click on Product's tab in NLM Server.

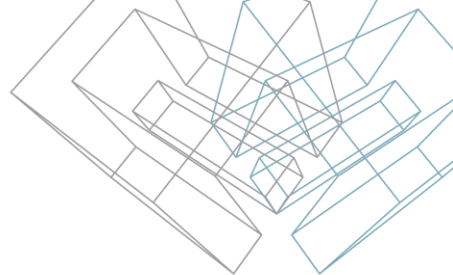


Revit User Network License Manager Installation Guide

- 1) Open Revit.
- 2) Click “TOOLS 4 BIM” tab.
- 3) Click “Options” button.
- 4) Tick “Use NLM” checkbox.
- 5) Enter address of your Network License Server.
Note: This address is provided by your IT administrator, and refers to the computer with Network License SERVER installed.
This address must be in one of the following formats:
http://networklicenseservername:8731 or
http://ipaddressoflicenseserver:8731
- 6) Click “Save” button – products have to be activated!
Note: if connection fails, please refer to the [Connection Troubleshooting](#) page of this guide.
- 7) You will find activated products under “Store” → “My Tools”.



Borrow the License



This feature allows user's system to work offline from the license server.

Network License Manager (NLM) Service —

☒ Use NLM

NLM Server URL (e. g. [http://licensingserver:](http://licensingserver:8731/)

<http://serverNAME:8731/>

Borrow License... Release Licenses

Manage Checkout

Checked out licenses allow a client system to work offline from the license server. The checked out license is made available for other clients only when it is manually checked in back to the server or check out time expires.

Select Available Checkout:

Features	Expiration
Cut Opening, Dynamic Legend, Excel2R, Execute, Insert Elements, C	5/11/2016
Execute, Rafter+M	5/11/2016

Maximum Available Date: 5/11/2016

Checkout Until:

2015-05-21

Please note that while checked out you will only be able to run features that are either in your checked out set or in local licenses.

Checkout Cancel

NETWORK LICENSE ACTIVATION

Troubleshooting

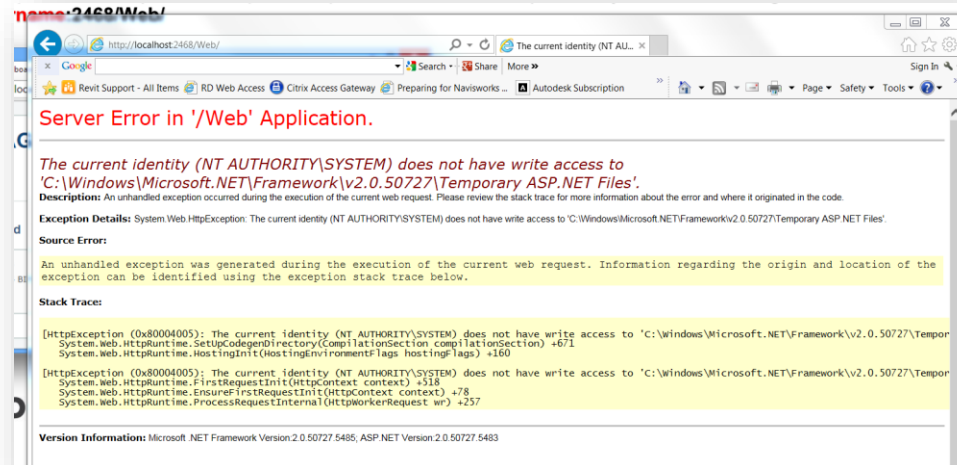
Network License Server Troubleshooting

1. IIS: The current identity does not have write access to Temporary ASP.NET Files

Error is displayed when opening <http://localhost:2468/Web/>:

The current identity (NT AUTHORITY\NETWORK SERVICE) does not have write access to 'C:\WINDOWS\Microsoft.NET\Framework\v2.0.50727\Temporary ASP.NET Files'

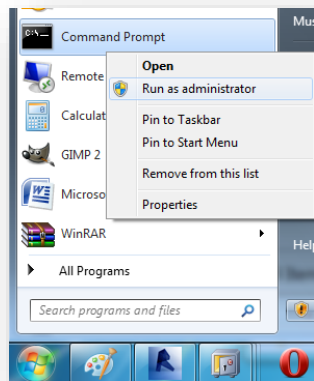
Example:



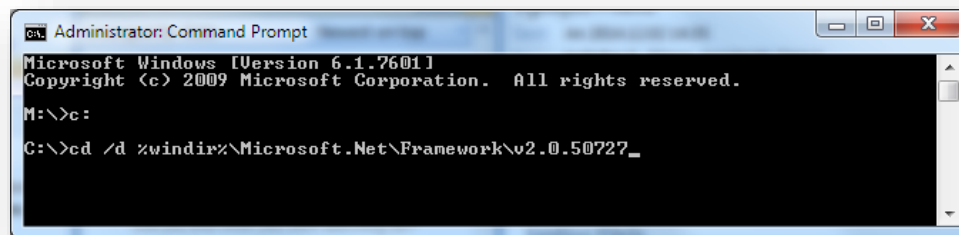
Network License Server Troubleshooting

Solution:

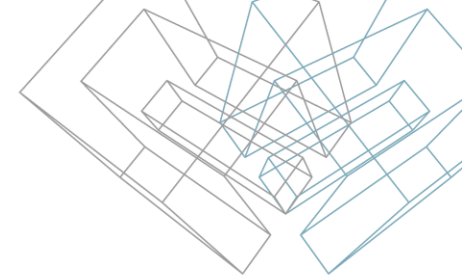
1) Launch Command Prompt (cmd) as Administrator:



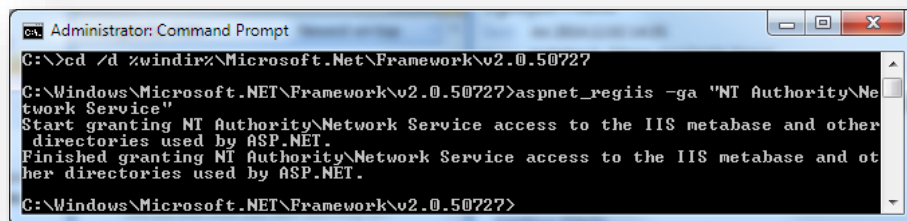
2) Enter command: `cd /d %windir%\Microsoft.Net\Framework\v2.0.50727:`



Network License Server Troubleshooting



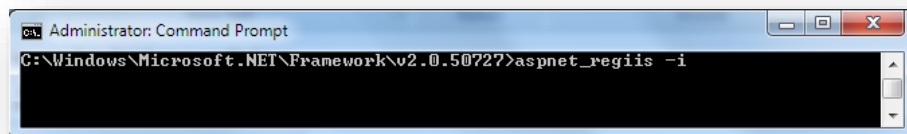
3) Enter command: *aspnet_regiis -ga "NT Authority\Network Service"*:



```
Administrator: Command Prompt
C:\>cd /d %windir%\Microsoft.Net\Framework\v2.0.50727
C:\Windows\Microsoft.NET\Framework\v2.0.50727>aspnet_regiis -ga "NT Authority\Network Service"
Start granting NT Authority\Network Service access to the IIS metabase and other
directories used by ASP.NET.
Finished granting NT Authority\Network Service access to the IIS metabase and other
directories used by ASP.NET.
C:\Windows\Microsoft.NET\Framework\v2.0.50727>
```

4) Check if page is loading now.

5) If it's not, enter command: *aspnet_regiis -i*

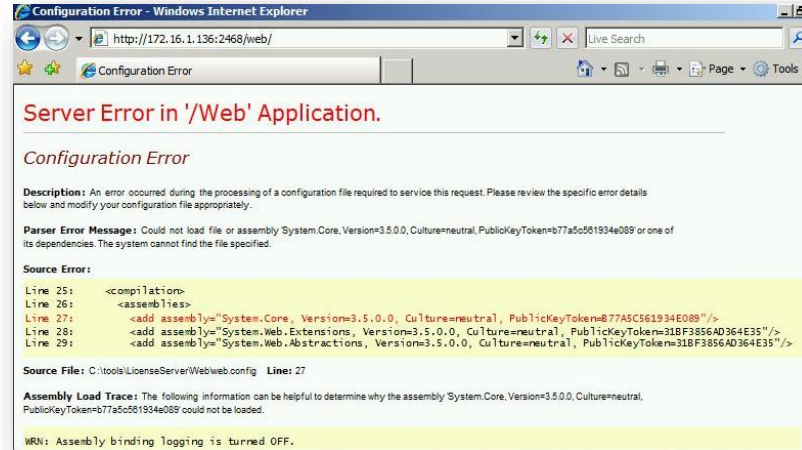


```
Administrator: Command Prompt
C:\Windows\Microsoft.NET\Framework\v2.0.50727>aspnet_regiis -i
```


Network License Server Troubleshooting

2. IIS: Configuration Error

Error is displayed when opening
<http://localhost:2468/Web/>:



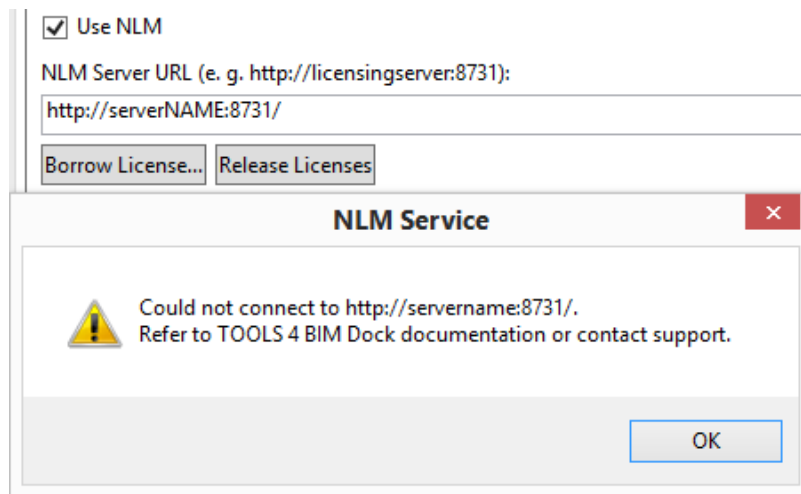
Solution:

Download and install Microsoft .NET Framework 3.5:
<http://www.microsoft.com/en-us/download/details.aspx?id=21>

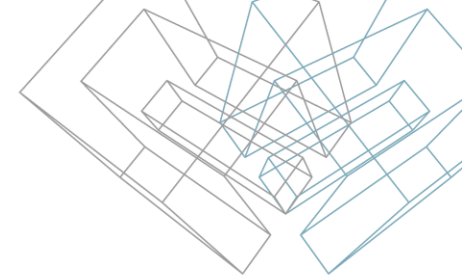
Connection to License Server Troubleshooting

Could not connect to http://<LicenseServer>:8731/

Example:



Connection to License Server Troubleshooting



Solution:

1. Ensure that License Server is reachable:

- 1.1. Open Command Prompt.
- 1.2. Enter command ping *LicenseServer* (where *LicenseServer* is the address of your license server without http:// and :8731).

Example:

```
Administrator: C:\Windows\system32\cmd.exe
C:\>ping LicenseServer
Ping request could not find host LicenseServer. Please check the name and try again.
C:\>_
```

- 1.3. If command returns error messages, contact your system administrator.

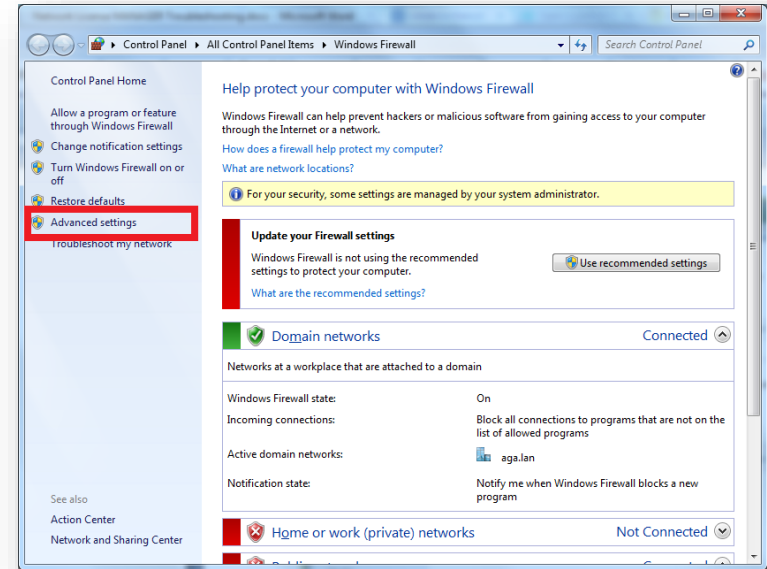
Connection to License Server Troubleshooting

2. Ensure that 8731 TCP port is open on License Server machine.

2.1. If you are using 3rd party Firewall software, consult its documentation on how to open the port.

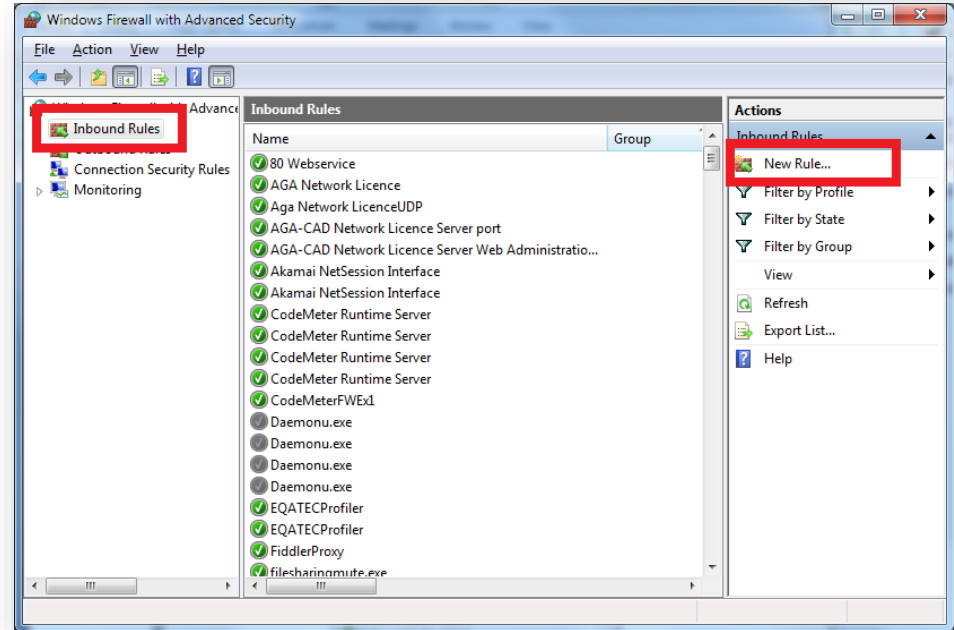
2.2. If you are using Windows Firewall, follow these steps:

- a) Choose Start → Control Panel. Click the System and Security link, and then click Windows Firewall.
- b) **Click the Advanced Settings link.** This can be found in navigation panel on the left. If you are not logged in as the Administrator, you will be asked for the password. This will open the "Windows Firewall with Advanced Security" window:



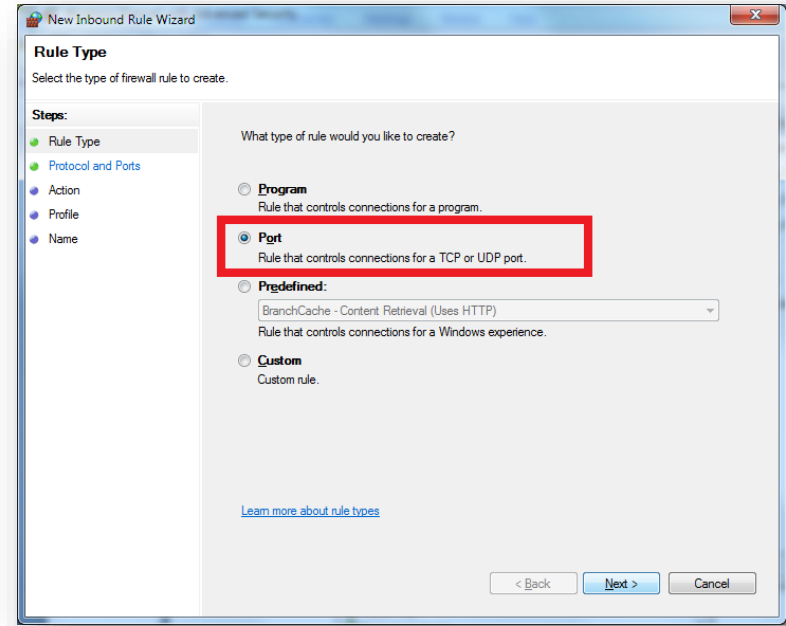
Connection to License Server Troubleshooting

c) Select **"Inbound Rules"**. This is located in navigation panel on the left. You will see a list of all your allowed programs (if you have any). Click **"New Rule"** in the panel on the right:



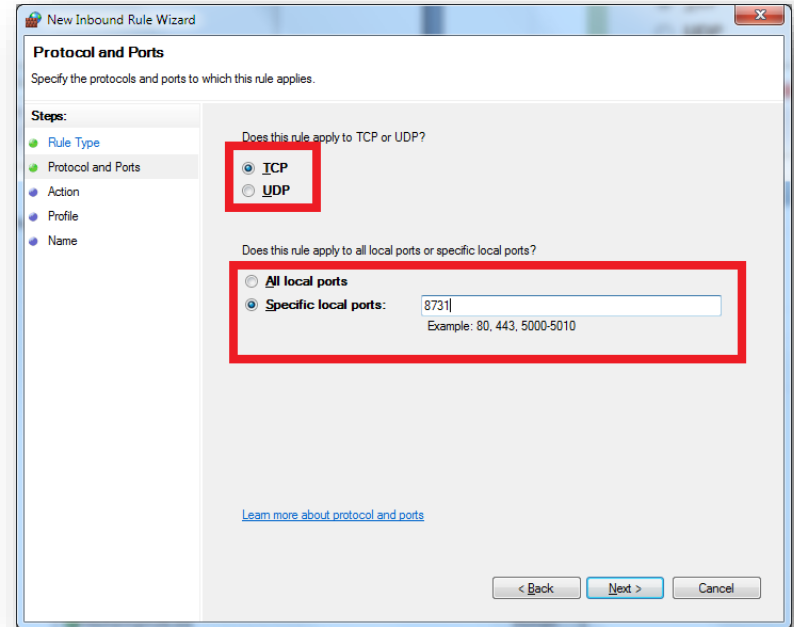
Connection to License Server Troubleshooting

d) Select "Port" from the first screen of the wizard. This will allow you to open ports instead of trying to find a specific program. Click Next > to continue:



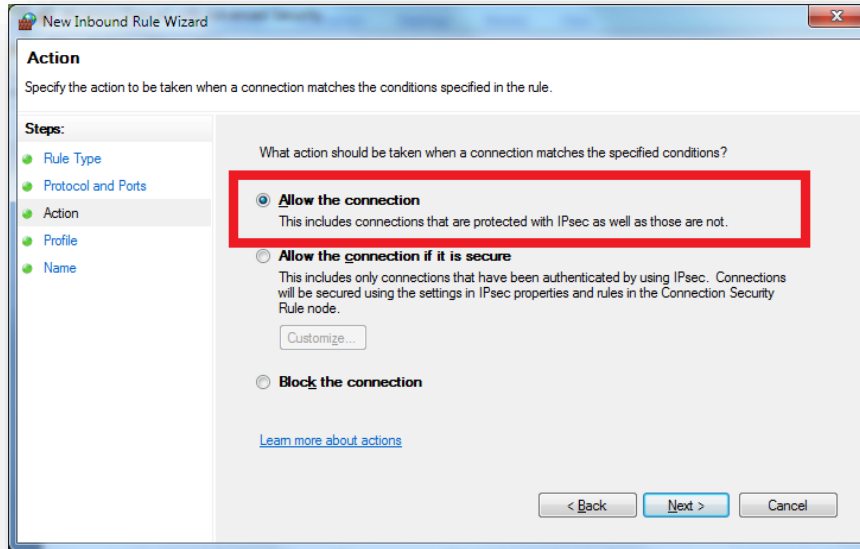
Connection to License Server Troubleshooting

e) Choose TCP. Enter Specific local port: 8731:

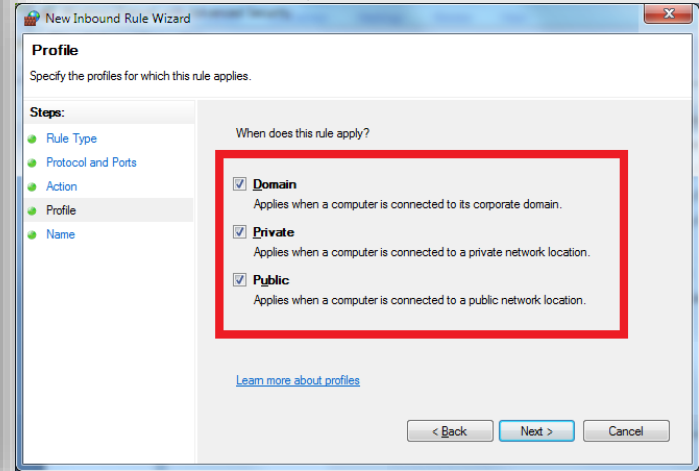


Connection to License Server Troubleshooting

f) Select "Allow the connection":



Then tick "Domain", "Private" and "Public"

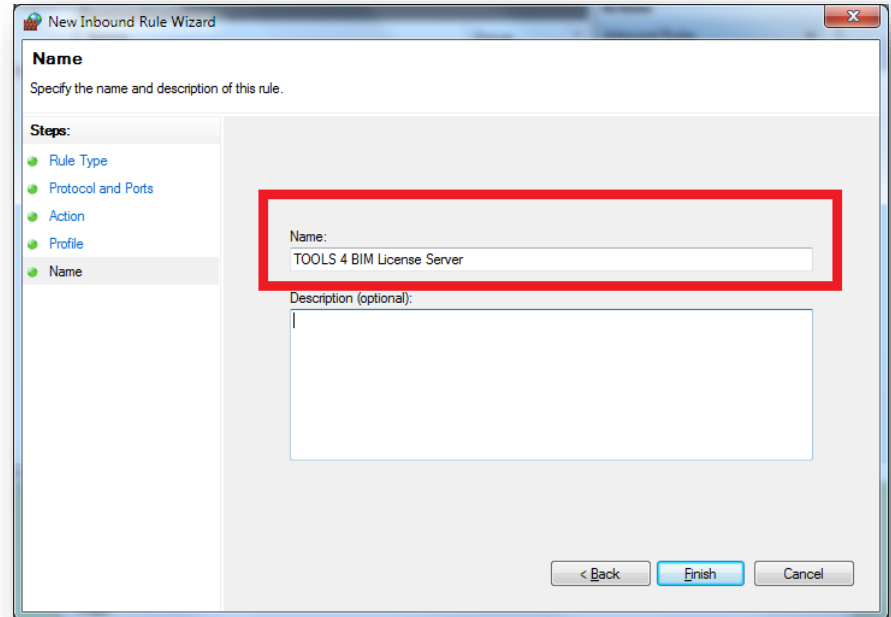


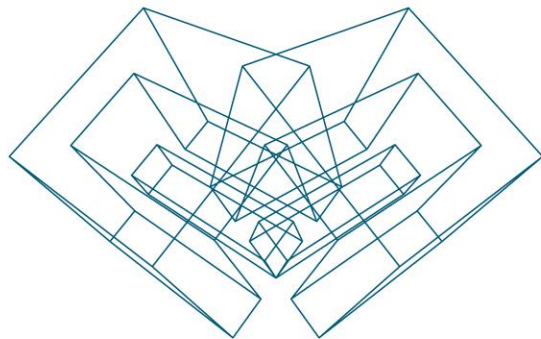
Connection to License Server Troubleshooting

g) Enter a name for this rule and press "Finish":

ENJOY WORKING WITH OUR PRODUCTS!

If you have any questions, contact us:
support@aga-cad.com





ENJOY WORKING WITH OUR PRODUCTS!

AGA CAD Ltd

T: +370 618 55671 | E: support@aga-cad.com | W: www.aga-cad.com