

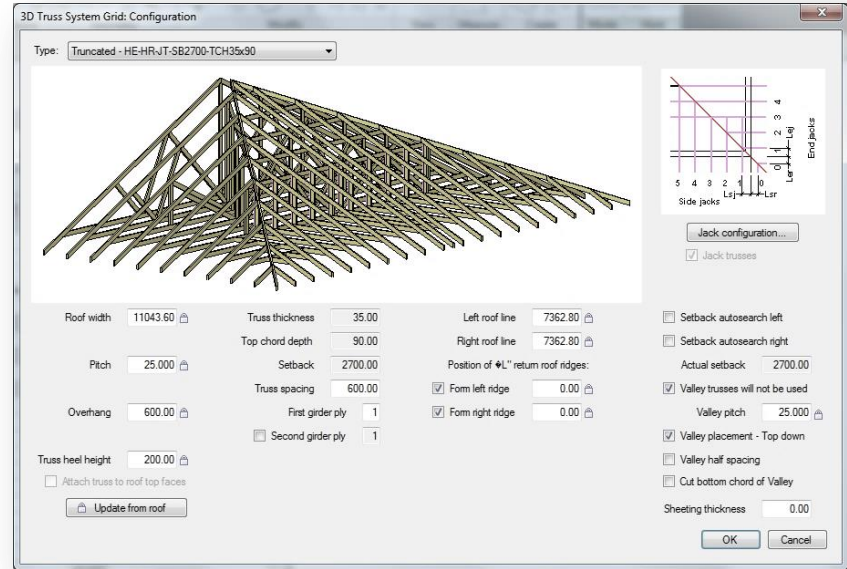
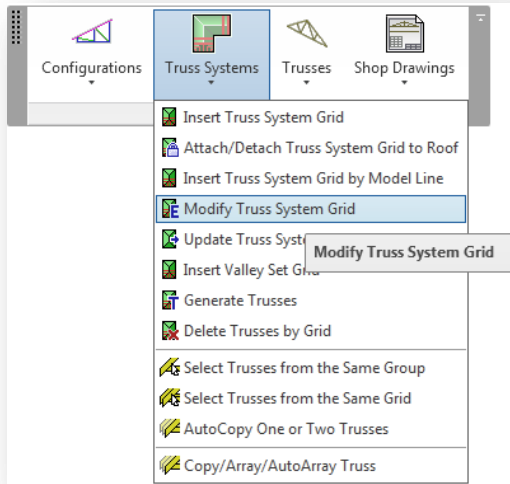
METAL FRAMING TRUSS+

Modify Truss System Grid

Chapter Three

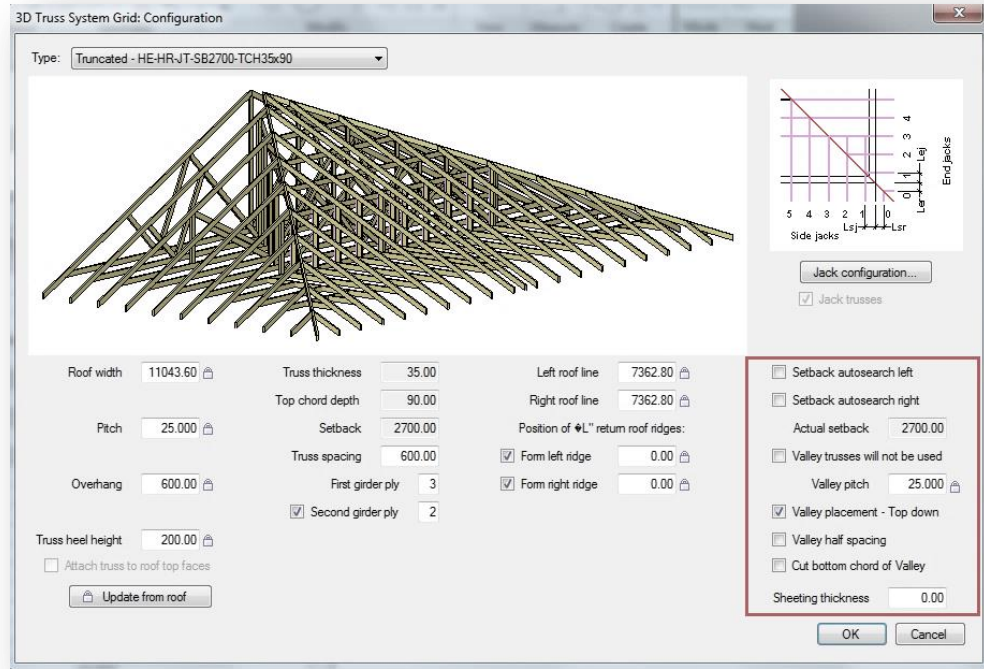
Modify Truss System Grid

- Select a truss system grid.
- Choose *Modify Truss System Grid* directly from “Truss+” menu.

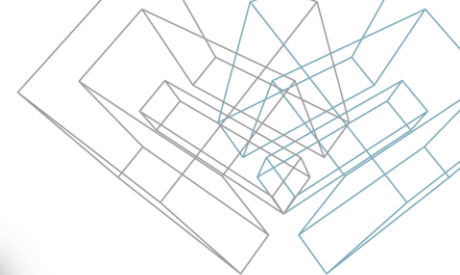


Modify Truss System Grid

- Parameters for defining setback and other valley parameters

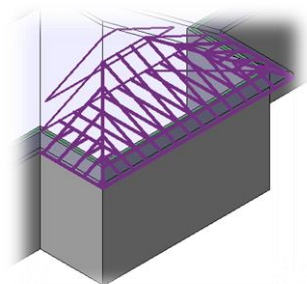
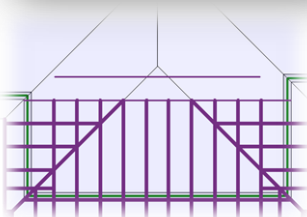


Modify Truss System Grid



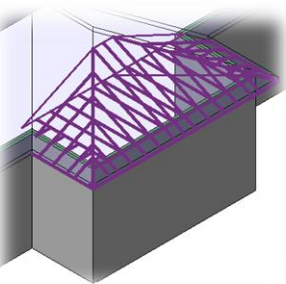
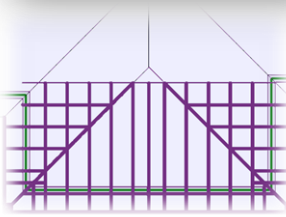
☒ Setback autosearch left

☐ Setback autosearch right



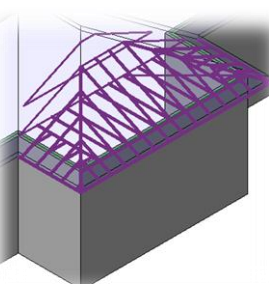
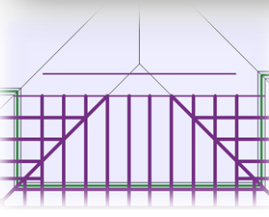
☐ Setback autosearch left

☒ Setback autosearch right



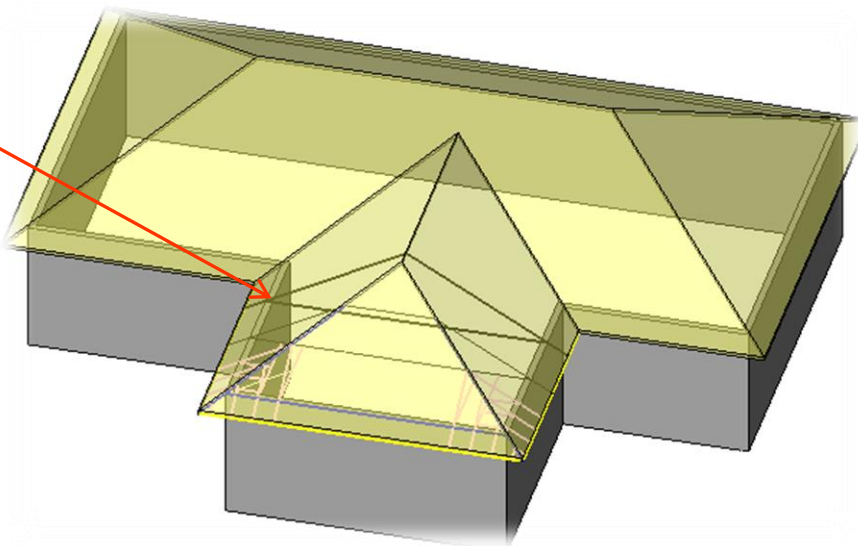
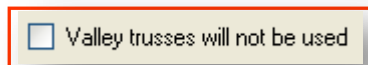
☒ Setback autosearch left

☒ Setback autosearch right

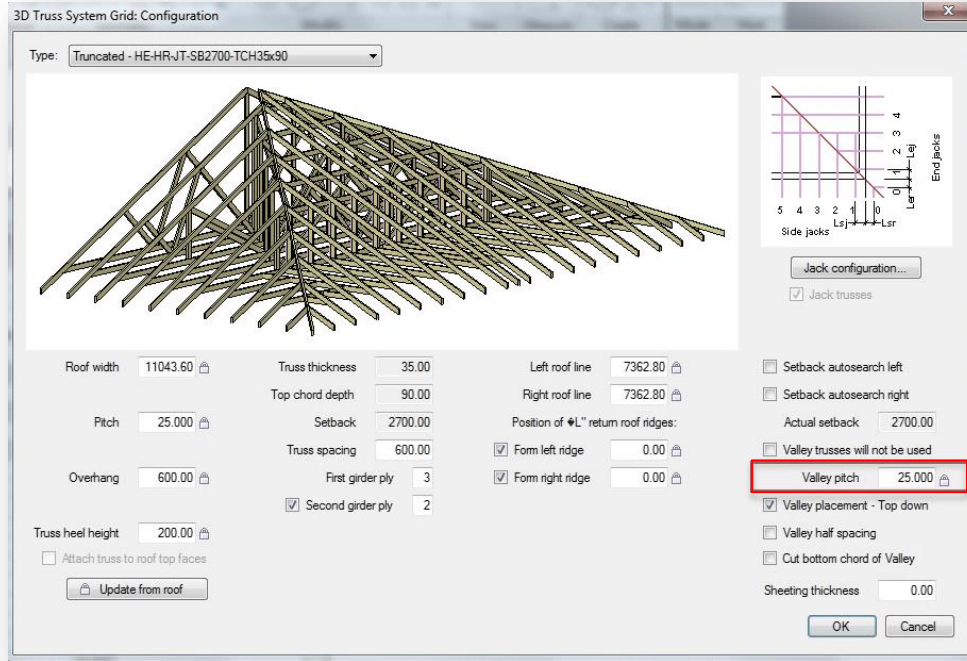


Modify Truss System Grid

- If Valley Set Grid needs to be inserted, switch Off the *Valley trusses will not be used* check box.

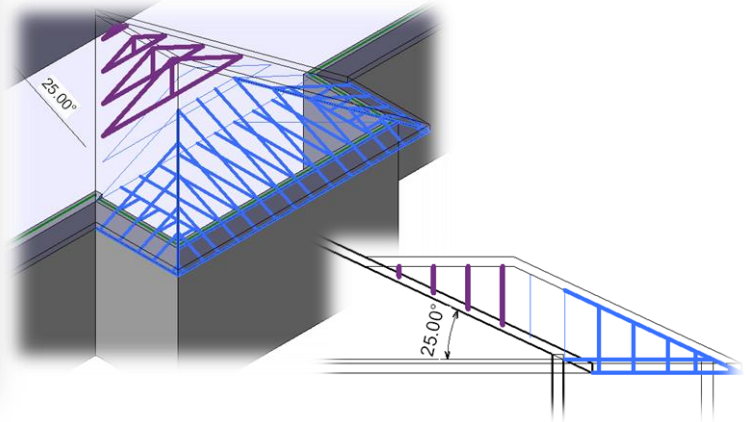


Modify Truss System Grid



- *Valley pitch*

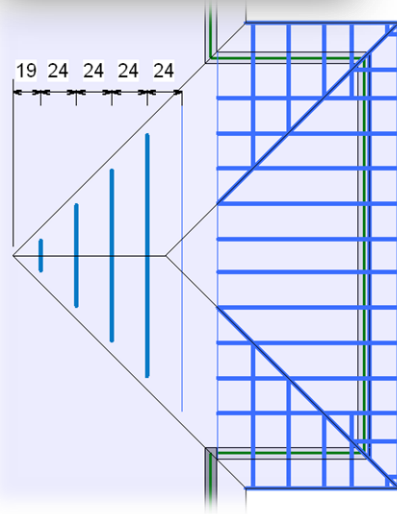
If there is a lock symbol near the value of parameter, it means that the truss system grid is attached to the roof (after updating grid from the roof, parameters will be updated automatically according to the roof geometry).



Modify Truss System Grid

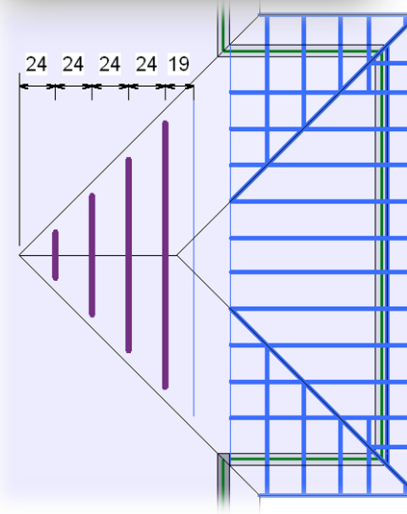
- Spacing is calculated from the bottom

☐ Valley placement - Top down



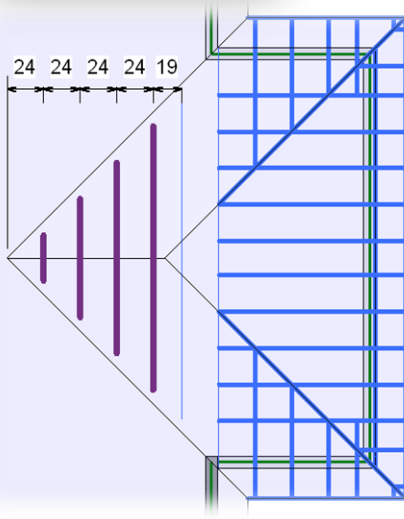
- Spacing is calculated from the top

☒ Valley placement - Top down

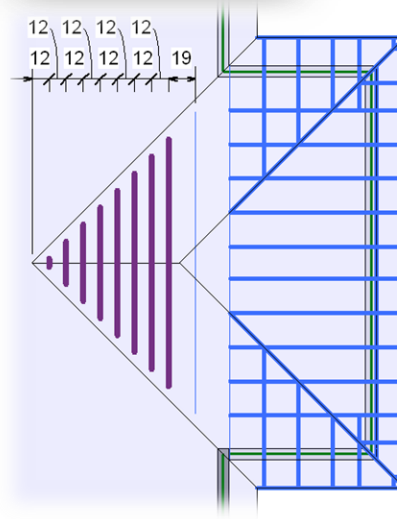


Modify Truss System Grid

☐ Valley half spacing



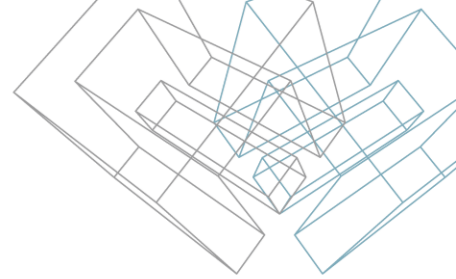
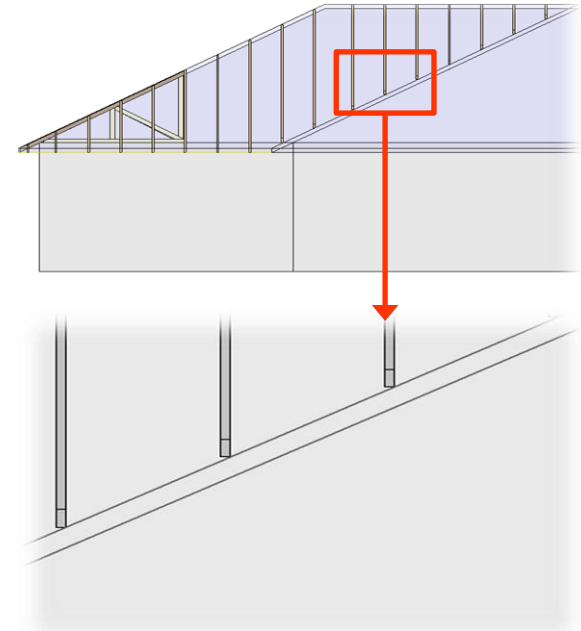
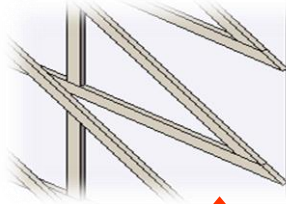
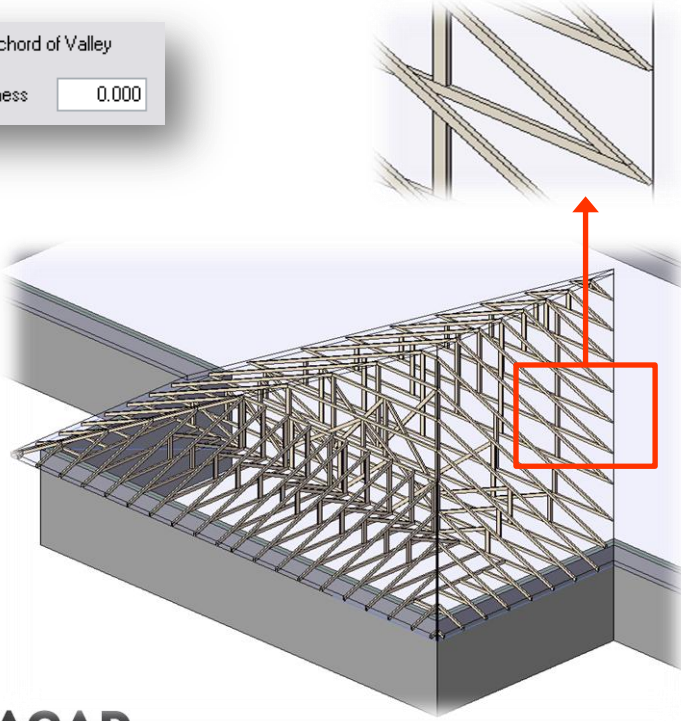
☒ Valley half spacing



Modify Truss System Grid

☐ Cut bottom chord of Valley

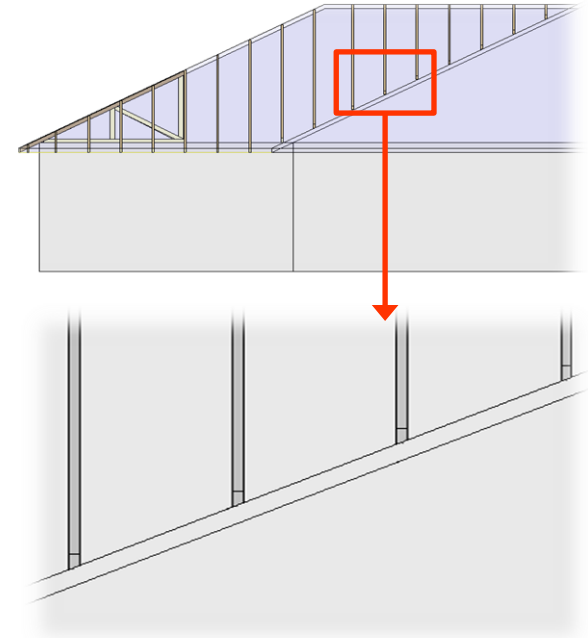
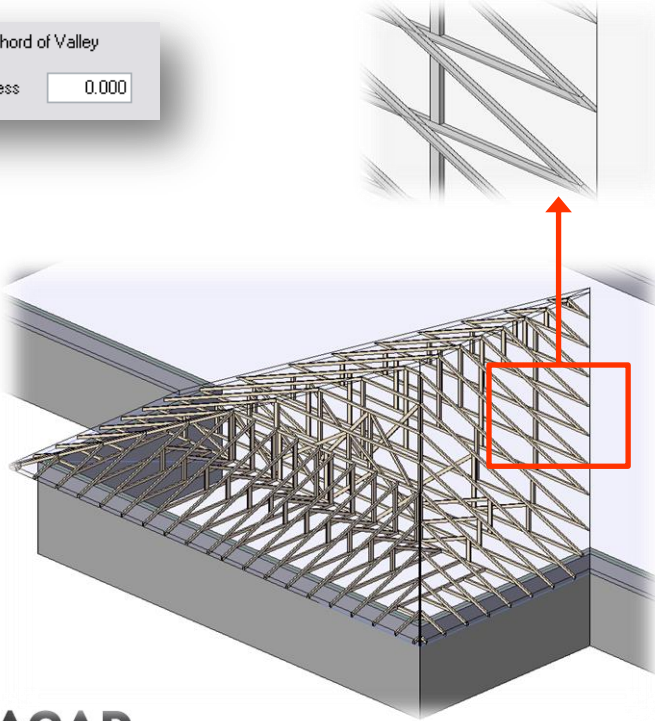
Sheeting thickness



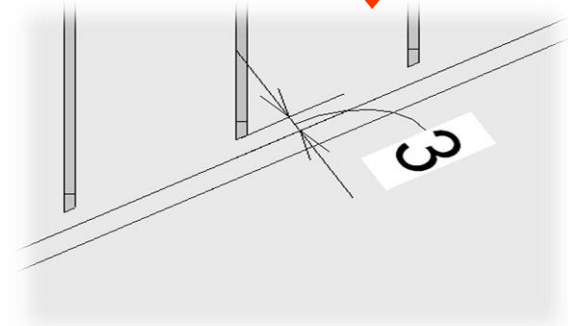
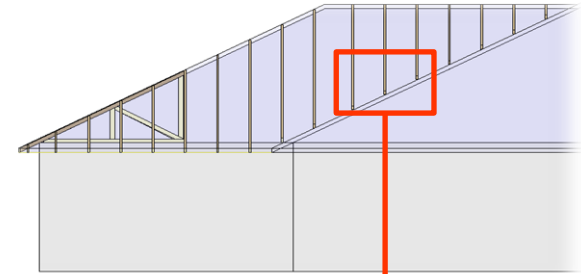
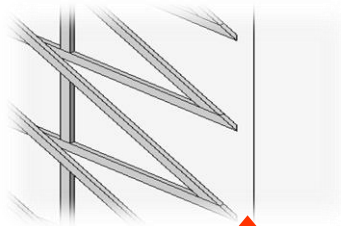
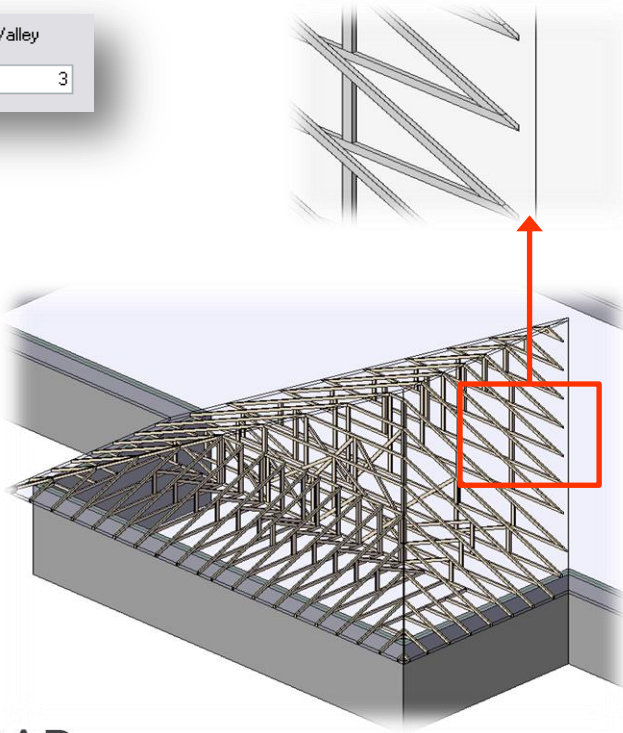
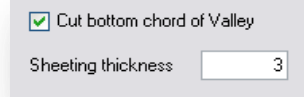
Modify Truss System Grid

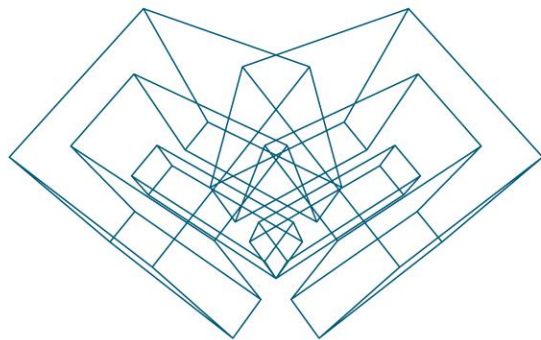
☒ Cut bottom chord of Valley

Sheeting thickness



Modify Truss System Grid





AGA CAD Ltd

T: +370 618 55671 | E: support@aga-cad.com | W: www.aga-cad.com