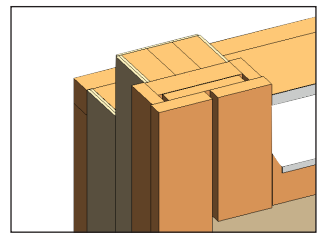
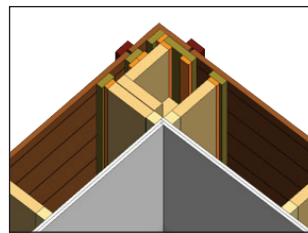
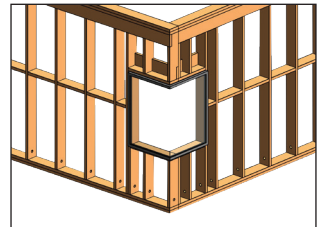
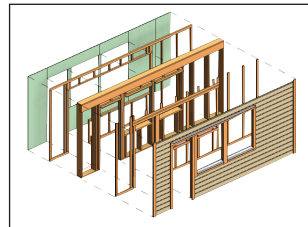




THE ONLY TRUE BIM SOFTWARE FOR TOTAL-PRECISION FRAMING OF TIMBER CONSTRUCTIONS IN REVIT®

DESIGN – ANALYSIS – DOCUMENTATION – FABRICATION – CONSTRUCTION

- MULTILAYER FRAMING of any building configuration
- EASY CUSTOMIZATION OF FRAMING OPENINGS – headers, sill plates, king studs, etc., incl. joined openings
- AUTOMATED FASTENER DISTRIBUTION
- SHOP DRAWINGS & CUT LISTS – dimensions, schedules, material take-offs, sheets
- CNC OUTPUT – export to any CNC machine and CAD/CAM production line
- Also for SIPS, CLT & HEAVY-TIMBER FRAMING





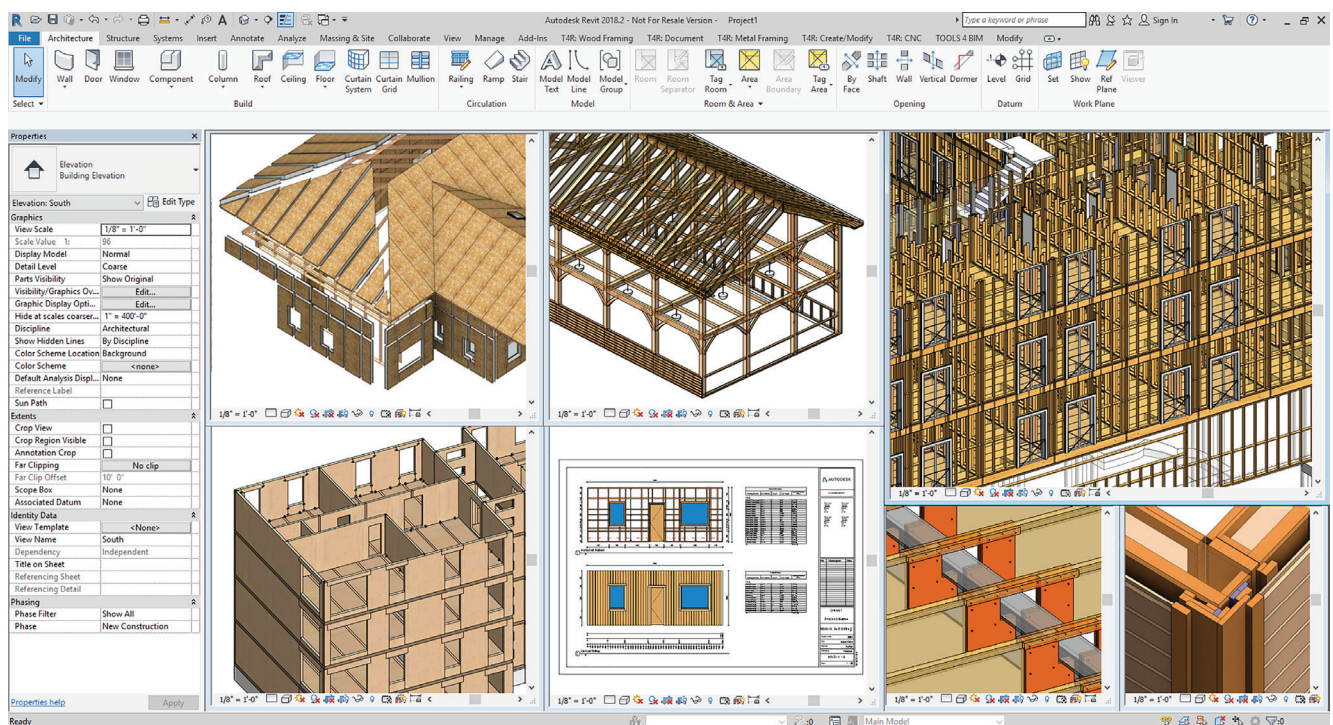
THE DEFINITIVE SOLUTION FOR WOOD FRAMING WITH REVIT®

Top Revit® users call AGACAD's **Wood Framing** software the most powerful and flexible BIM software on the market for constructions with multilayer timber-frame walls, floors and roofs. That includes prefabricated panels, rafters and trusses, and robust SIPs, CLT and post-and-beam solutions.



Advanced automation and built-in best practices help BIM professionals make optimal choices, move much faster, and avoid errors at every stage – from design and documentation to fabrication and construction.

It's easy to quickly batch-add, modify or mark just the right elements or parameters, distribute details, flexibly manage openings and connections, and find clashes. Frames dynamically update and adapt, ensuring that shop drawings and cut lists are always accurate.



DESIGN

WF Suite is ideal for modelling both residential facilities and commercial multistory buildings accurately and efficiently. The Multi-Framing feature for copying and updating framing elements (and documentation) for identical walls, floors and roofs radically reduces the time needed to model large-scale projects. Also, individual panel frames' analytical lines are inter-connected and aligned in the same plane, and can be exported to structural analysis software and further processed to create a full analytical model.

INTEGRATE

Coordination of BIM teams is greatly enhanced by integrating WF Suite with the Cut Opening BIM Solution, which identifies structural and engineering clashes throughout your Revit® model and creates openings with fire safety components for all MEP services and building structures at the relevant intersections.

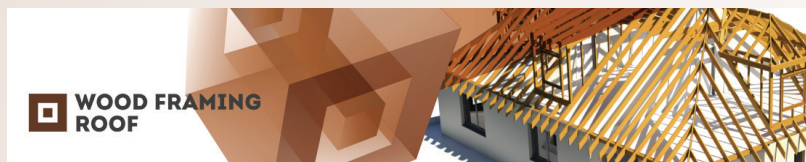
FABRICATE

Frames created with WF Suite may be exported for production to a WEINMANN, Randek or various other CNC machines or CAD/CAM production lines. Optional CNC export is good for workflow integration, eliminates duplicate work and reduces room for error.

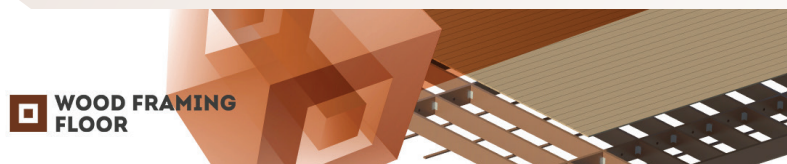
CHOOSE THE FULL SOLUTION SUITE OR SEPARATE MODULES



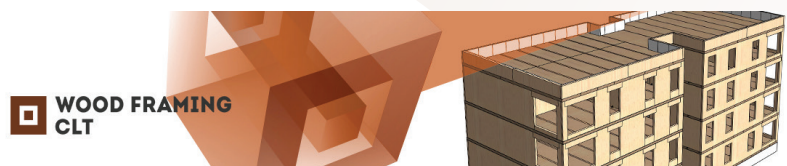
Wood Framing Wall makes framing wood walls fast and easy with real-time full project updates in Revit®. Plus it generates views with automatic dimensions for wall panels or segments as well as accurate bills of materials and shop drawings. So quality production and accurate assembly on site are ensured.



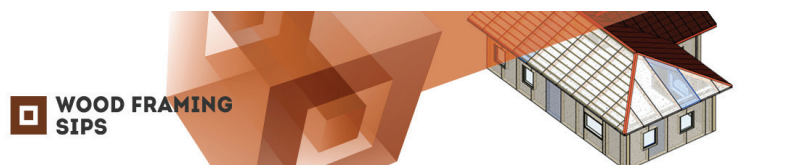
Wood Framing Roof lets Revit® users instantly create prefabricated wood frame roof panels, wooden truss and/or rafter systems of any shape or complexity, perform structural analysis, and generate custom shop drawings. It's a potent BIM workflow booster. Functions are versatile, parameters easy to control, and changes occur in real time. No more drafting – just design and decide, knowing you'll get a high-quality model.



Wood Framing Floor makes framing wood floors fast and easy with real-time full project updates in Revit®. Plus it generates views with automatic dimensions for floor panels or segments as well as accurate bills of materials and shop drawings. So quality production and accurate assembly on site are ensured.



Wood Framing CLT lets Revit® users instantly create cross-laminated timber floor, roof slabs and wall panels of any shape or complexity. Functions are versatile, parameters easy to control, and changes occur in real time. No more drafting – just design and decide, knowing you'll get a high-quality model. Plus the software generates views with automatic dimensions for panels or segments as well as accurate bills of materials and shop drawings. So quality production and accurate assembly on site are ensured.



Wood Framing SIPS makes framing with structural insulated panels – prefabricated building components for use as walls, floors and roofs – fast and easy with real-time, full-project updates in Revit®. Plus the software generates views with automatic dimensions for panels or segments as well as accurate bills of materials and shop drawings. So quality production and accurate assembly on site are ensured.



Wood Framing OAK lets Revit® users instantly frame heavy-timber walls, floors, and roofs, create post-&-beam structures, perform structural analysis, and generate custom shop drawings. Functions are versatile, parameters easy to control, and changes occur in real time. No more drafting – just design and decide, knowing you'll get a high-quality model.

IDEAL FOR ARCHITECTS, STRUCTURAL ENGINEERS, AND MANUFACTURERS OF TIMBER HOUSES OR OTHER WOOD FRAME CONSTRUCTIONS.

Greater efficiency, bigger BIM benefits and ease of customization in:

DESIGN – ANALYSIS – DOCUMENTATION – FABRICATION – CONSTRUCTION

"Wood Framing Truss+ RT allows us to model almost any type of truss, any configuration. It's intuitive and innovative and has saved us quite a bit of time, especially in the revising and updating of roofs. Overall, AGACAD's Wood Framing Suite is a great solution for anyone working in Revit who is looking for a more comprehensive, efficient and intuitive system for modeling roof structures. The Metal Framing Truss+ add-on allows us to be more accurate in our work, while utilizing the same truss modeling capabilities of Wood Framing Truss+ RT. It has given substance to our models, which is extremely beneficial to our clients."

George Aslanidis, Senior CAD & BIM Technician for Structural Engineering, Thorson Baker + Associates, Inc. (TBA)
(United States, Puerto Rico, Canada)

"AGA CAD's wood framing solutions are simple to use and can be very helpful. They save a lot of time creating framing plans with immediate generation of take-offs."

Francisco Contreras Chaves, CEO and Architect, CINCO (Chile)

"Rafter+ and Truss+ are pretty much perfect for my needs; they quite quickly frame the whole roof. That's very good indeed. The tools are robust and don't cause any problems in Revit itself."

Ian Kidston, Owner, All Extension Design Service (Australia)

"This software saves me 10% to 40% of my working time, depending on the model's complexity. These are the most useful Revit extensions I've seen. Others that I've tried didn't help much."

Heiner Dillmann, Owner, Müller & Neumeister (South Africa)

"I needed a program that could do a lot, and AGACAD was able to show me how Wall+ does just about everything I asked. That was enough to convince me that Wall+ is the best Revit add-in for panelization, knowing AGACAD would listen to my needs and actually develop the program to meet them... at an impressive timeline too! We often use unique and custom details to improve productivity or make a difficult spot in a building easier for all trades to build. It used to be difficult, if not impossible, to create those details and communicate them clearly. Wall+ and the team behind it gave us more confidence in our ability to create unique and custom panel shop drawings."

Chandel Ninmann, Virtual Design/Construction Specialist, UBS (USA)

"Framing and panelling became much faster with the AGACAD software, especially due to the ability to save configurations and the automated processes for creating shop drawings and schedules. I don't have to do all the repetitive tasks anymore."

"Now I can deliver BIM models, shop drawings and schedules in a shorter period. I can work much faster and because of that I can offer more competitive project pricing."

Awan Mikael, Proprietor, A-BET (The Netherlands)

"We downloaded the software and made some great progress in a very short time. I've never experienced such great support, both quick and professional."

Johannes Swensson, JPS Konsult (Sweden)



BUILDING BIM TOGETHER

AGACAD is the developer of the world's widest range of true BIM software for Revit® professionals. Our solutions – with 13,000+ users in 130 countries – share top practitioners' insights and automate best practices in a spirit of 'Building BIM Together'.

The focus is on three areas –BIM Content Management & Classification, BIM for Prefabrication Construction, and

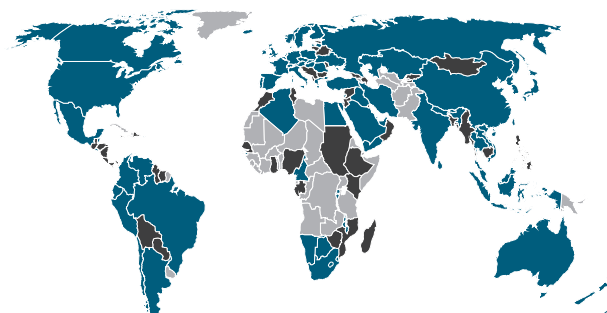
Digital Asset Inventories & BIM for Facility Management – with advanced technologies for the design of wood structures (including CLT, SIPs, and heavy-timber framing), metal structures (including ventilated facades and curtain walls and panels), precast concrete, hangers and supports, MEP openings, and sprinklers, and for BIM data management.



CALL OR WRITE TODAY TO GET A QUOTE

T: +370 618 55 671 | E: info@agacad.com

START YOUR FREE TRIAL AT www.agacad.com



>13,000 clients in
>130 countries