

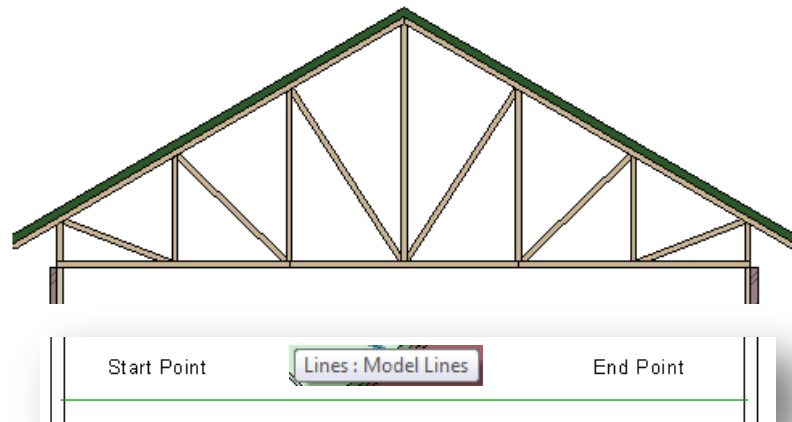
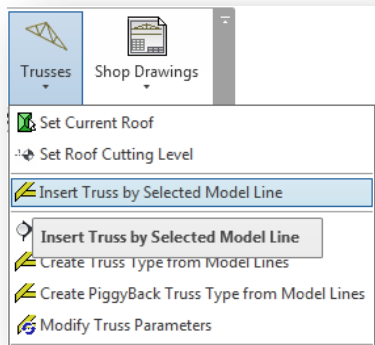


METAL FRAMING TRUSS+

Insert Truss by Model Line

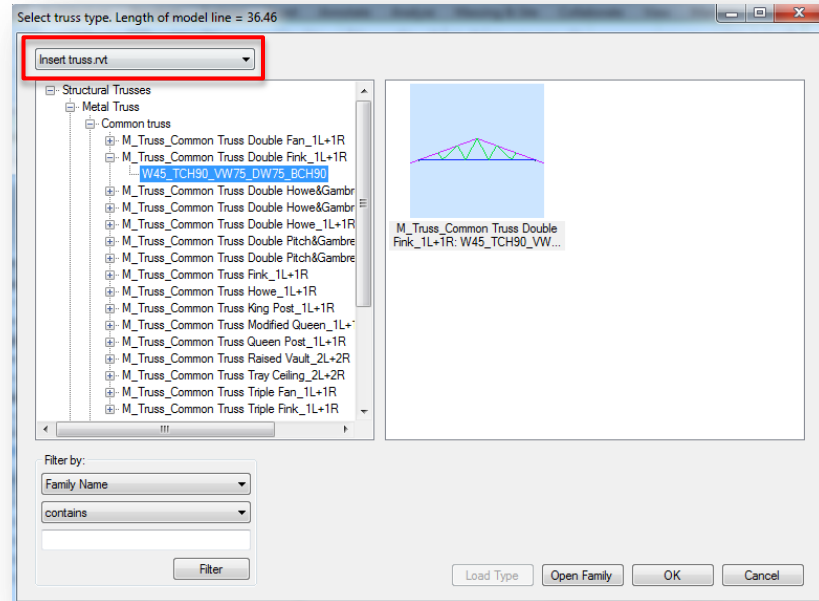
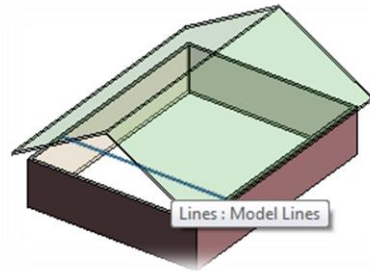
Insert Truss by Model Line

- Draw Model line in the plan from one wall core to another wall core (or from-to support elements) on correct level (level of wall's top).
- Start and end points of Model line will also be the start and end points of truss.
- Start and end points must be in correct positions: middle points (center line) of the heel webs.
- Select Model line and run the *Insert Truss by Selected Model Line* function from “Truss+” menu.



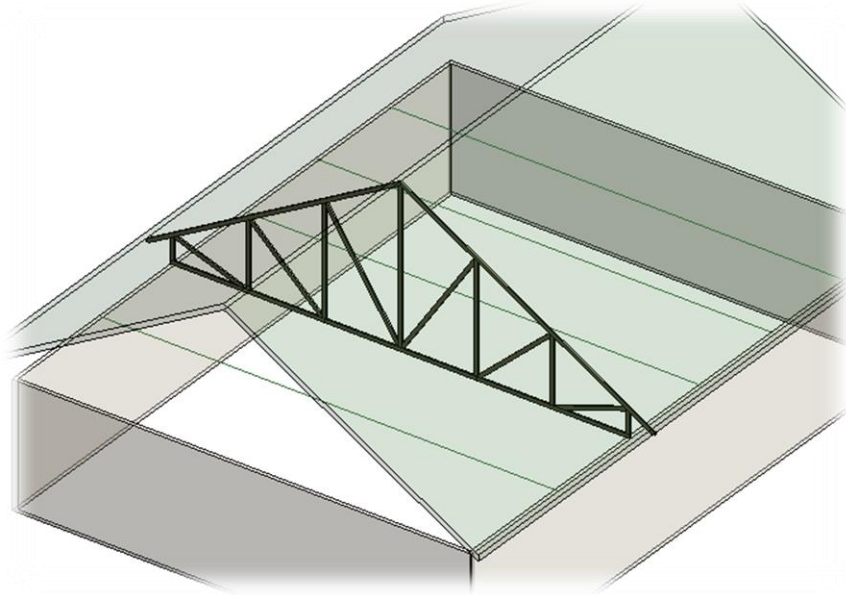
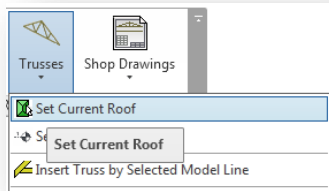
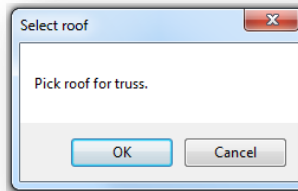
Insert Truss by Model Line

- Choose required truss type from the truss family browser. You can select any opened project before selection.



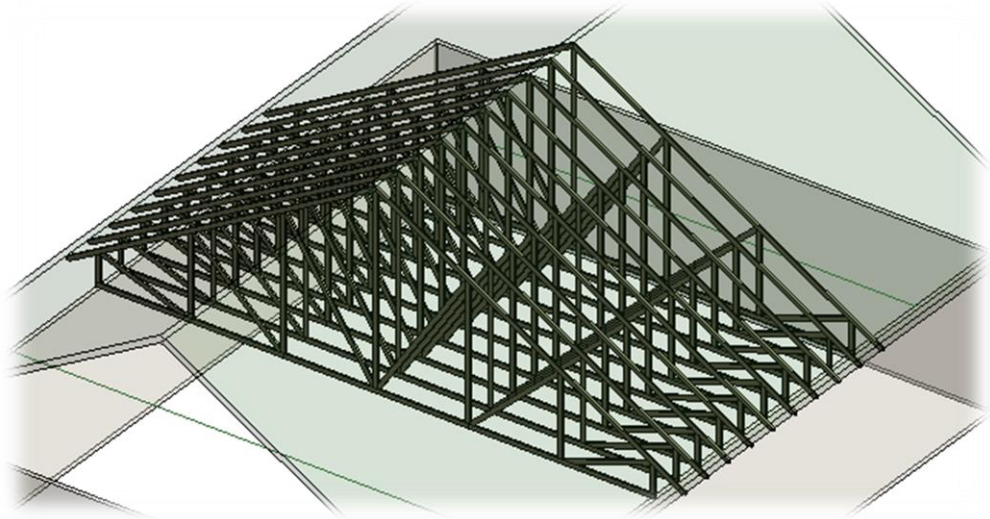
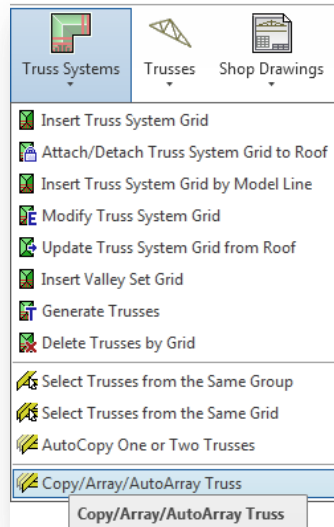
Insert Truss by Model Line

- Pick the roof for the first time if software asks, or use the *Set Current Roof* function in the beginning.
- Truss is inserted in correct layer and position.



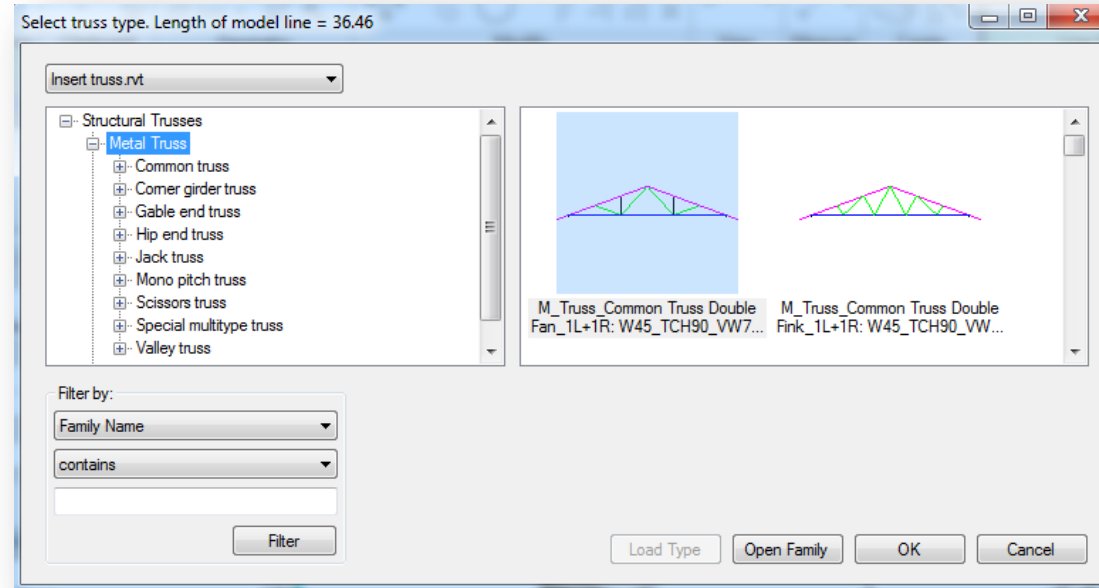
Insert Truss by Model Line

- There is no need to draw model lines in every truss location.
- You can use *Copy/Array...* function for truss distribution along the roof.



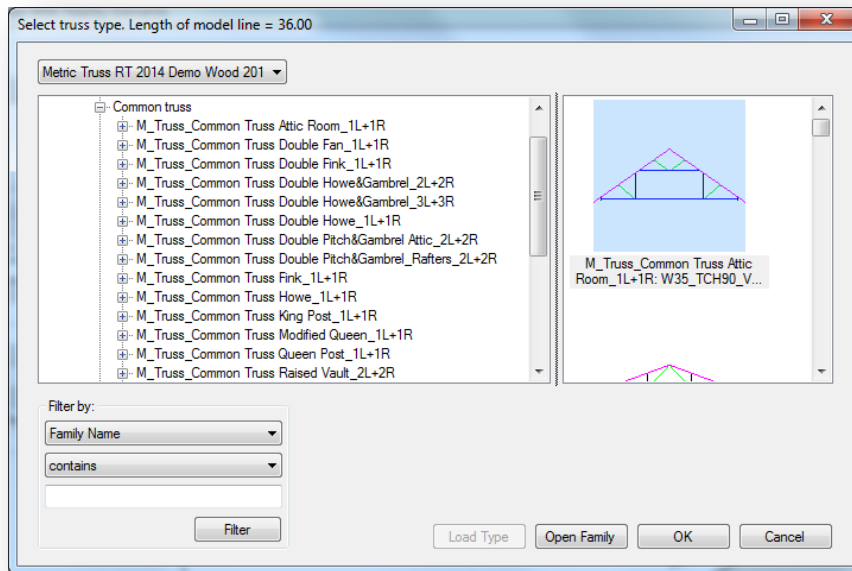
Insert Truss by Model Line

- All truss families have a special name and classification.
- Truss families are classified by type and position in roof layout like Common truss, Gable end truss, Scissors truss and so on.



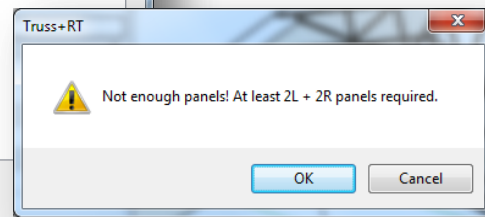
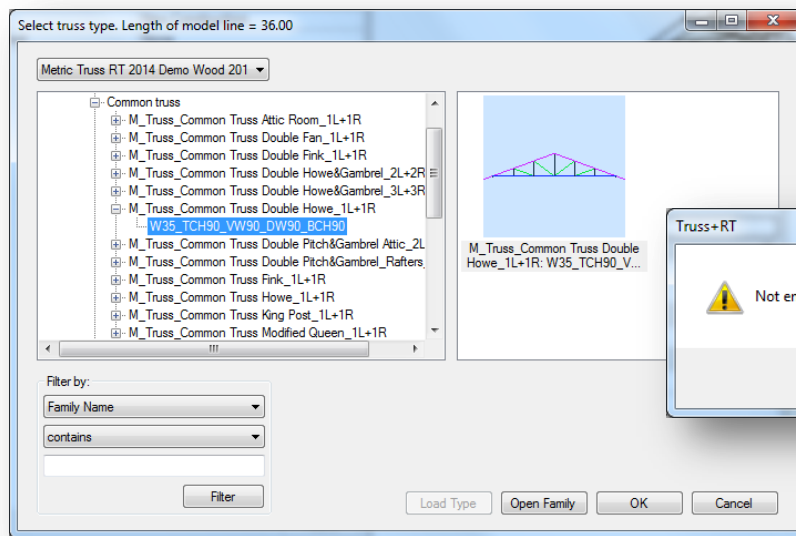
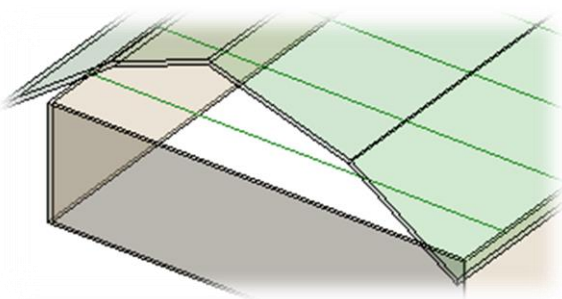
Insert Truss by Model Line

- All names have a special end like “_1L+1R” or “_2L+2R”. Numbers show how many slopes a truss can have in the left “_XL” “+” and the right “XR” sides of the truss.
- Inserting a truss by Model line, you must know how many slopes a roof has and use the correct truss family.



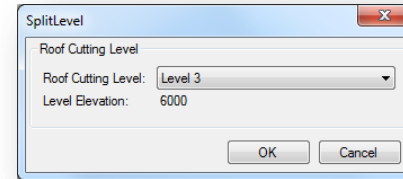
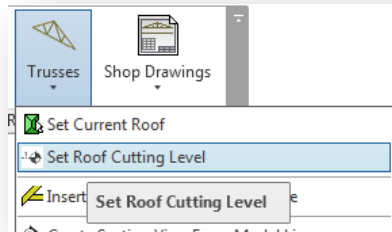
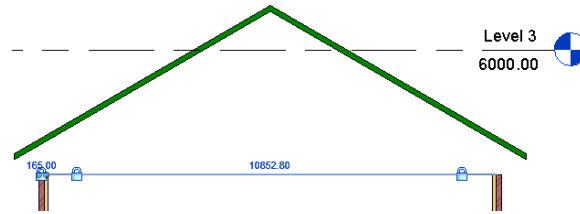
Insert Truss by Model Line

- If the roof has more slopes than can be generated by the selected truss family, software shows an error message.
- If all trusses that come with software installation don't have enough panels or you want to distribute truss webs in other way, please use **T4R Truss Builder**.
- More about **Truss Builder** - refer to the corresponding Help section "Create Truss Type by Model Lines".



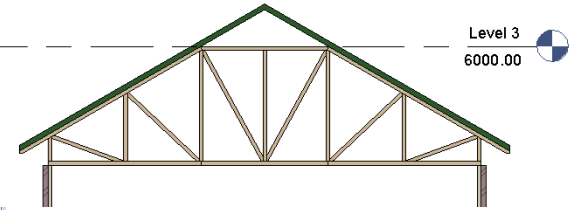
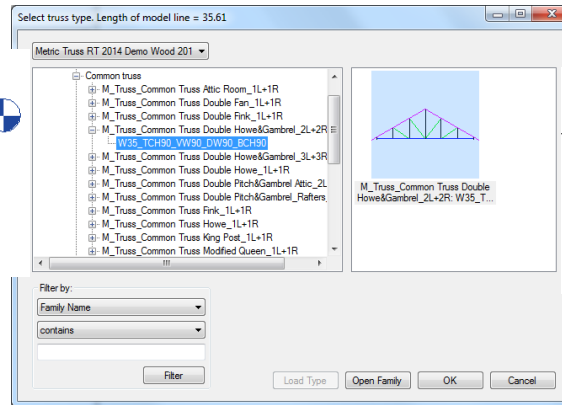
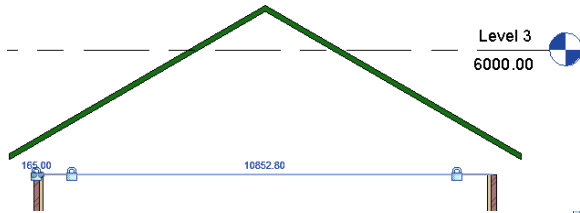
Insert Truss by Model Line

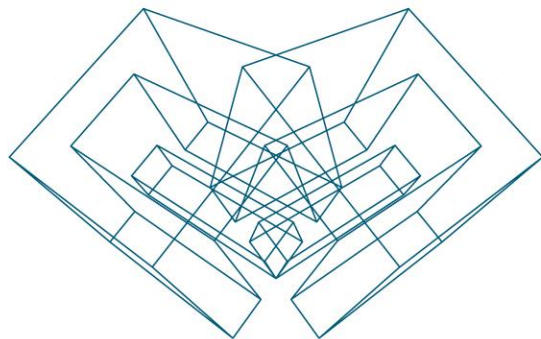
- If the truss is too high at some location you can use *Set Roof Cutting Level*.
- Run this function and select roof cutting level.



Insert Truss by Model Line

- Select Model line and run *Insert Truss by Model Line* function.
- Inserted truss will be attached to the roof and its cutting level.





AGA CAD Ltd

T: +370 618 55671 | E: support@aga-cad.com | W: www.aga-cad.com