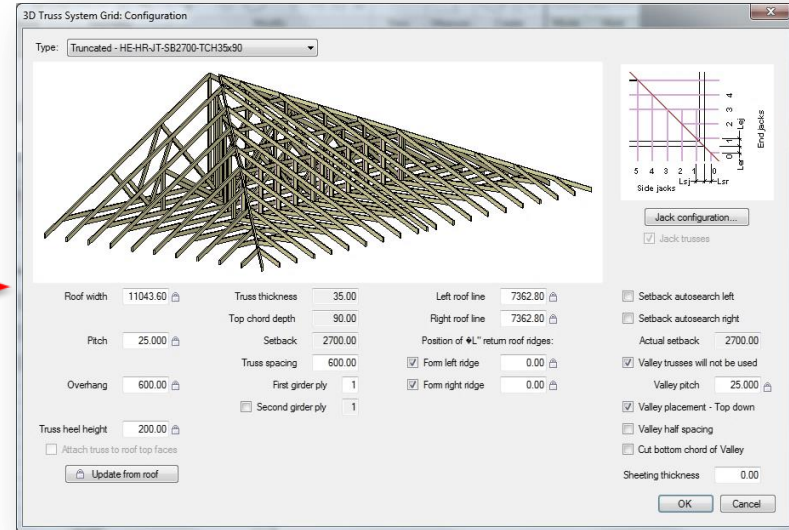
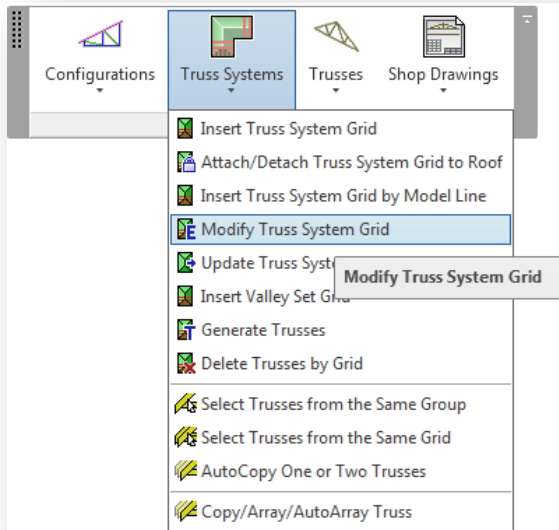
An abstract graphic composed of white wireframe lines and solid blue geometric shapes, including a large cube and several intersecting planes, set against a background of a modern parking garage with concrete pillars and a blue floor.

# METAL FRAMING TRUSS+ Modify Truss System Grid

## Chapter Two

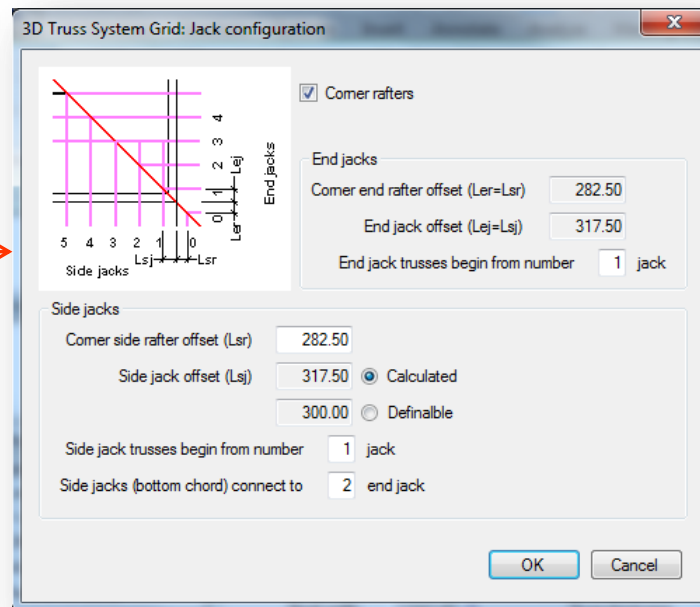
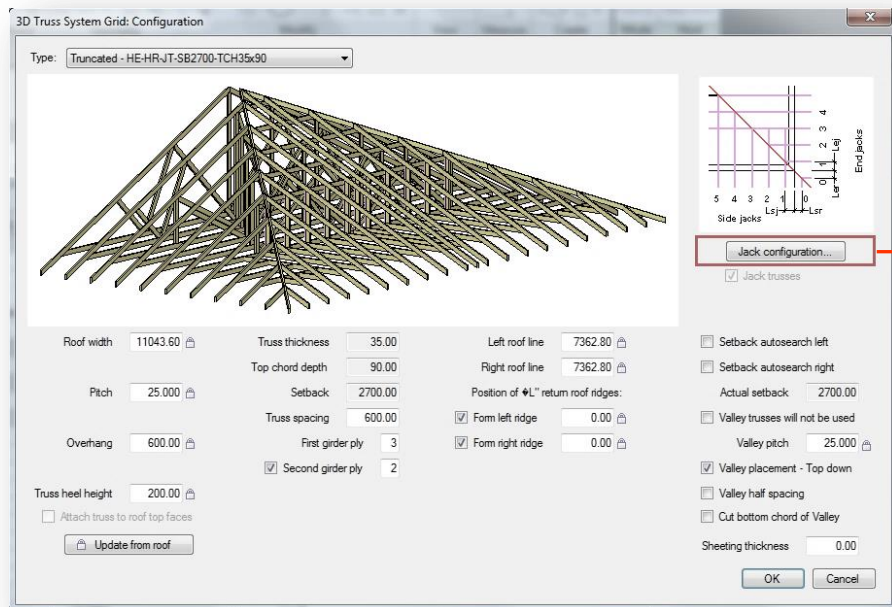
# Modify Truss System Grid

- Select a truss system grid.
- Choose *Modify Truss System Grid* directly from “Truss+” menu.



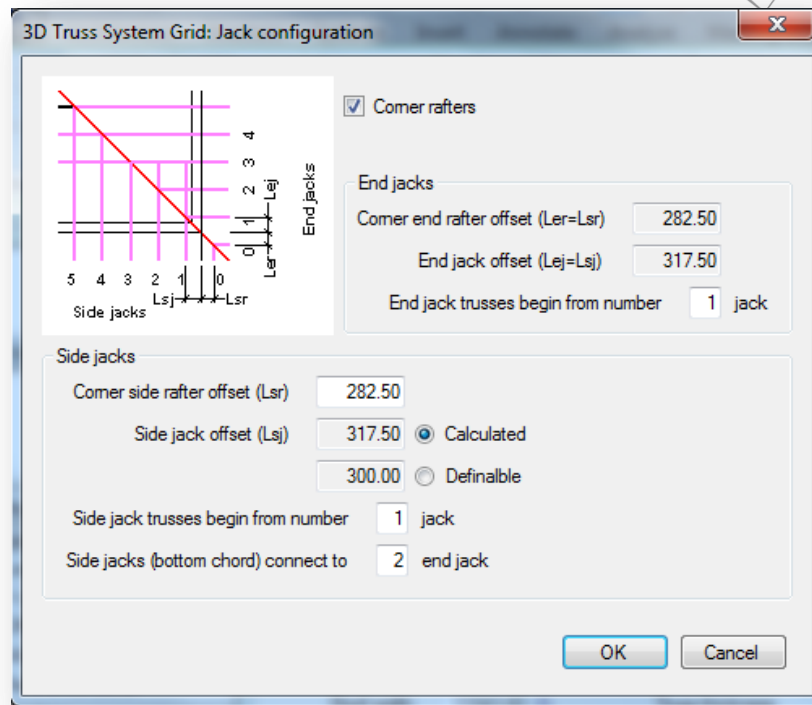
# Modify Truss System Grid

- To set corner and end rafters or jacks parameters, choose *Jack configuration*.



# Modify Truss System Grid

- *Lsr* – a distance from the wall surface to the corner side rafter. Commonly  $Lsr=Le_r$ .
- *Lsj* – a distance from the wall surface to the side jack. This parameter can be calculated or user-defined. Commonly  $Lsj=Le_j$ .
- *Corner rafters* – if this check box is ticked, corner rafters will be generated.
- *End jack trusses begin from number* – describes from which element are generated end jack trusses, instead of rafters.
- *Side jack trusses begin from number* – describes from which element are generated side jack trusses, instead of rafters.
- *Side jacks (bottom chord) connected to* – describes to which end jack are connected side jacks bottom chords.

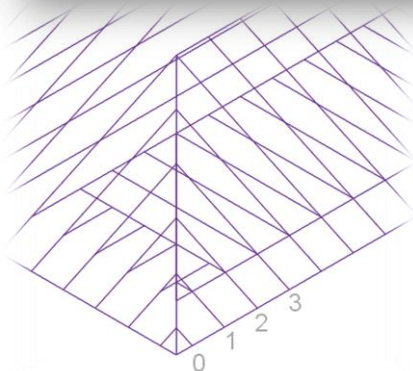




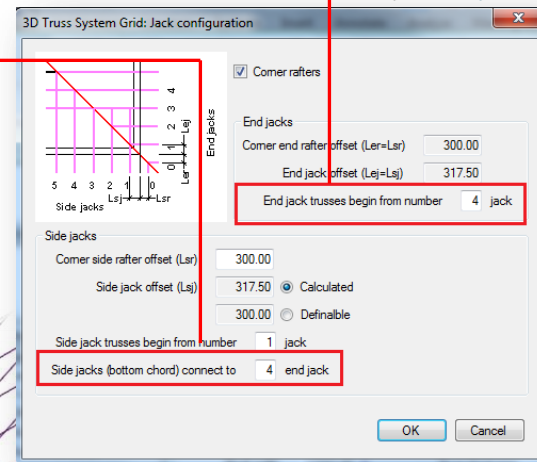
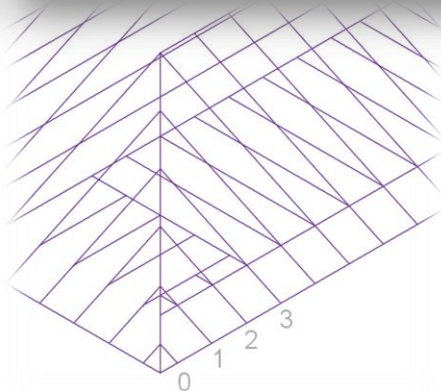
# Modify Truss System Grid

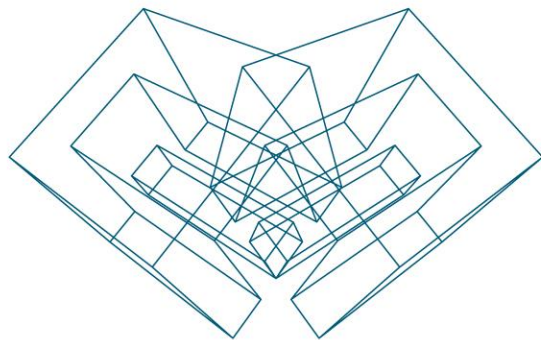
- If this    number is greater than this   , than side jacks bottom chords will connect to the first end jack truss.

Side jacks (bottom chord) connect to  end jack



Side jacks (bottom chord) connect to  end jack





AGA CAD Ltd

T: +370 618 55671 | E: [support@aga-cad.com](mailto:support@aga-cad.com) | W: [www.aga-cad.com](http://www.aga-cad.com)